

AGRICULTURE, FORESTRY AND FISHING INDUSTRIES 2015

JANUARY 2018

Published in January by the

Fiji Bureau of Statistics

P.O. Box 2221

Government Buildings

Suva

Fiji

Reproduction of Material

Any table or material published in this report may be reproduced and published without the Fiji Bureau of Statistics' prior approval. However, the source of information should always be identified and acknowledged in all modes of presentation.

Key title: A Study of the Agriculture, Forestry and Fishing Industries ... (Fiji Bureau of Statistics)

Abbreviated key title: Agri, Forest and Fish. ind. (Fiji Bur.Stat.)

© Fiji Bureau of Statistics

Printer: Printhouse Ltd

Enquiries:

Fiji Bureau of Statistics
Ratu Sukuna House
MacArthur Street
Suva
Fiji

P O Box 2221
Government Buildings
Suva
Fiji

Telephone: [679] 331 5822
Fax No.: [679] 330 3656
E-mail: info@statsfiji.gov.fj
Website: www.statsfiji.gov.fj

PREFACE

The report covers and sums up the economic performance of entities engaged in Agriculture, Forestry and Fishing activities in 2015. Production data is obtained from the Ministries of Agriculture, Fisheries and Forests and the detailed cost structure etc. was gathered from selected farmers and establishments engaged in Agriculture, Forestry and Fishing activities. These activities includes the exploitation of vegetables and animal natural resources, comprising the activities of growing crops, raising and breeding of animals, harvesting of timber and other plants, animals or animals products from a farm or their natural habitats.

The important numbers presented are the macro-economic aggregates such as Gross Output, Intermediate Consumption, Value Added, Compensation of Employees, Consumption of Fixed Capital and Operating Surplus. These aggregates are combined with similar information on other industries to provide an estimate of GDP, which is a measure of our economy's size. Information made available in this report will allow us to work out the industry's contribution to the economy. Information contained in this report constitutes inputs to a national accounts system which basically provides a quantitative image of the whole economy.

Information on the Agriculture, Forestry and Fishing Industry would be useful to a good number of users, for instance the;

- 1) Economist who needs to analyze supply and demand in the industry.
- 2) Planner who uses the data to forecast the economy's performance.
- 3) Investor who wishes to have a close look at opportunities available in the agriculture, forestry and fishing sector.

The cooperation of those establishments who supplied the information presented in this report is hereby acknowledged. The Bureau of Statistics will continue to seek their support as we need to continually provide reliable statistics for evidence based planning. I also would like to thank the staffs who were engaged in the conduct of the survey and the preparation of this report.



Epeli Waqavonovono [Mr.]
Government Statistician

ACKNOWLEDGEMENT

Ministry of Agriculture:

Mrs. Sera Bose

Ms. Sainiana Kirisitiana

Ms. Ita Tunidau

Ms. Alitia Yaya

Agriculture technical officers

Mrs. Bikashni Prasad

Ministry of Forestry:

Mrs. Olivia Vakaloloma

Mr. Manueli Cakautabu

Ms. Leilani Kotobalavu

Ms. Pranishma Kumar

Mrs. Sanjana Lal

Ministry of Fisheries:

Mr. Epironi Turaganivalu

All farmers and establishments.

NOTES TO THE REPORT

1 The interpretation of the symbols used in this report is as follows:

0 nil return or a figure less than half the given value

r revised

p provisional

N/A Not Available

2 Total values are subject to rounding errors.

3 Key to Abbreviations:

Abbreviation	Terms
CFC	Consumption of Fixed Capital
COE	Compensation of Employees
EP&S	Economic Planning and Statistics
FBoS	Fiji Bureau of Statistics
FSIC	Fiji Standard Industrial Classification
FSC	Fiji Sugar Corporation
GFCF	Gross Fixed Capital Formation
GO	Gross Output
IC	Intermediate Consumption
MFE	Milk Fat Equivalent
OS	Operating Surplus
SNA	System of National Accounts
VA	Value Added

4 VA in the report refers to Gross Value Added.

5 Wages do not include an imputation for family help. This labour compensation appears under operating surplus.

6 A lot of farmers engage in mixed farming together with the main crop e.g. farming of vegetables together with taro, which is the main crop. In such a case the activities of the farmer will be covered under taro which is assigned FSIC 01131.

7 The Macroeconomic aggregates (GO, IC, VA, COE, CFC and OS) of the commodities are expressed in Fiji Dollars.

CONTENTS

	<u>Page No</u>
1 INTRODUCTION	
1.1 History of Study	1
1.2 Need for statistics relating to Agriculture, Forestry and Fishing	2
1.3 Peculiar features of the Agriculture, Forestry and Fishing industries	2
2 METHODOLOGY	
2.1 Legal Basis	3
2.2 Reference Period	3
2.3 Classification and Standard Used	3
3 Results	3

LIST OF TABLES

Summary Tables

Table A: Macroeconomic Aggregates (\$)	4
Table B: 2015 Results compared with 2014 Results	7
Table C: Value Added 2014 and 2015 (\$) and Percentage Change	8

LIST OF GRAPHS

Graph 1: Agriculture, Forestry and Fishing Value Added	11
Graph 2: The drivers of Value Added in Agriculture	11

LIST OF APPENDICES

Appendix I: Production and Price for Agriculture, Forestry and fishing	12
Appendix II: Value Added	16
Appendix III: Primary Production: Selected Agriculture Products	17
Appendix IV: Sugar Industry Production and producer prices	18
Appendix IV: Concepts and Definition	19
Appendix VI: Industrial Classification Used	21
Appendix VII: Sample Questionnaire	33

1 INTRODUCTION

1.1 History of studies undertaken

This report contains the results of the 2015 study on the Agriculture, Forestry and Fishing industries taking place in Fiji together with other relevant information on the industry. It was an ad hoc study and now conducted by the Fiji Bureau of Statistics (FBoS) annually because of the need by its National Accountants to re-base the constant price Gross Domestic Product (GDP) for Agriculture, Forestry and Fishing Industries.

A brief description of similar studies done in the past is given below in chronological order:

1989

The purpose of conducting a study for 1989 was to determine the benchmark levels for the Agriculture, Forestry and Fishing industries in the rebasing of the constant price GDP from 1977 to 1989. The results of the study are contained in the report titled “*A Study of Agriculture, Forestry and Fishing Sector for the compilation of the 1989 Gross Domestic Product.*”

1995

The 1995 study was also conducted to determine the benchmark levels for the Agriculture, Forestry and Fishing industries in the rebasing of the constant price GDP, but this time, from 1989 to 1995. The results of the study are contained in the report titled “*1995 Gross Domestic Product Sources and Methods*”.

2002

The 2002 study of the Agriculture, Forestry and Fishing industries was conducted for the rebasing of the constant price GDP from 1995 to 2002. The outcomes of the study are contained in the report titled “*A Study of the Agriculture, Forestry and Fishing Sector 2002*”.

2008

Another study of the Agriculture, Forestry and Fishing industries was conducted in 2008, for the rebasing of the constant price GDP from 2002 to 2008. The outcomes of the study are contained in the report titled “*A Study of the Agriculture, Forestry and Fishing Industries 2008*”.

2011

Another study of the Agriculture, Forestry and Fishing industries was conducted in 2011, for the rebasing of the constant price GDP from 2008 to 2011. The outcomes of the study are contained in the report titled “*A Study of the Agriculture, Forestry and Fishing Industries 2011*”. From 2011 the survey has been conducted annually.

1.2 Need for statistics relating to Agriculture, Forestry and Fishing

Agriculture, Forestry and Fishing activities are widely scattered in the country and the economic function they perform in channeling the flow of goods from the producer to the consumer is of great importance. These industries account for a substantial proportion of the total economic activity, whether in terms of the sector to the GDP or in terms of its share of total employment and Gross Fixed Capital Formation (GFCF).

Statistics on Agriculture, Forestry and Fishing are needed for the preparation of national accounts so that a meaningful study of the whole economy can be made. The data can also be used to construct the input-output table that shows the inter-connection of the Agriculture, Forestry and Fishing industries with other industries.

Policy makers too require the data for formulating sound economic and social policies that augment capital formation. In addition, the entities engaged in the Agriculture, Forestry and Fishing industries find the data helpful.

1.3 Peculiar features of the Agriculture, Forestry and Fishing industry

Despite difficulties faced due to the peculiar features of the sector, great care was taken whilst conducting the study. Nevertheless, it is possible that some omission or double-counting may have occurred, but not that large to be able to affect the overall results in any significant way. The peculiar features of the industries are:

- The industries are highly sensitive to weather. Droughts, floods and hurricanes are natural disasters that have great impact on the industries.
- Period of production is relatively long in some cases, for example, trees take years to mature so therefore the forestry sector can experience high intermediate costs in some years, but suddenly a very high value added in a particular year.
- Activities are carried out by a wide variety of units, e.g.
 - small and large business units. Due to the different size of business units engaged e.g. small and large farms in the growing of coconuts, caution has to be exercised in calculating the input ratios as they have an impact on the macroeconomic aggregates,
 - own account individuals. It has to be ascertained that they are not producing for own consumption only, and
 - other units whose main activities are in other industries. The need to include them in the study, if market activity is involved.
- Sub-leasing of farms is prevalent e.g. in the case of sugarcane – there is a probability that some work may have been double counted (if the co-tenant’s work is not deducted from the main tenant, and also picked up for the co-tenant) or sometimes not counted at all (if the co-tenant’s work is correctly deducted from the main tenant, but not picked up for the co-tenant).
- Many small establishments go in and out of business with changing economic and seasonal factors.
- Most small business units do not maintain proper records, so careful estimates are calculated.

2 METHODOLOGY

2.1 Legal Basis

The study was conducted under the provisions of the Statistics Act (Cap 71). This Act stipulates the collection of data, as well as protects the confidentiality of the information submitted.

2.2 Reference Period

The study conducted was for the calendar year 2015. If the accounting year differed from the calendar year, information was provided for the accounting year that covered the major part of the calendar year 2015.

2.3 Classification and Standard Used

- The Fiji Standard Industrial Classification (FSIC) 2010 has been used for classifying industries and commodities.
- The Macroeconomic Aggregates obtained are based on the 2008 System of National Accounts (SNA).

The coverage and scope of each activity and the survey procedures used are discussed in detail under **Detailed Discussion by commodities produced in the Agriculture, Forestry and Fishing industries.**

3 RESULTS

All data contained in this report are in Fiji Dollars and in current prices.

3.1 Macroeconomic Aggregates

Table A: Macroeconomic Aggregates (\$).

FSIC 2010		GO	IC	VA	COE	CFC	OS
SUB-CLASS	DESCRIPTION						
	TOTAL AGRICULTURE, FORESTRY AND FISHING	1,028,103,358	467,431,835	560,671,523	103,428,946	34,884,766	422,357,811
	CROP AND ANIMAL PRODUCTION, HUNTING AND RELATED SERVICE ACTIVITIES	839,798,166	371,699,808	468,098,358	82,246,985	26,017,652	359,833,721
	Growing of non-perennial crops	374,562,110	144,315,202	230,246,908	44,347,742	12,114,224	173,784,942
	Growing of cereals (except rice)leguminous crops and oil seeds	4,448,450	1,385,203	3,063,247	190,502	0	2,872,745
01111	Growing of cereals (except rice)leguminous crops and oil seeds	4,448,450	1,385,203	3,063,247	190,502	0	2,872,745
	Growing of rice	6,012,550	2,380,788	3,631,762	376,285	0	3,255,477
01121	Growing of rice	6,012,550	2,380,788	3,631,762	376,285	0	3,255,477
	Growing of vegetables and melons, roots and tubers	217,908,110	77,483,813	140,424,297	34,439,287	457,142	105,527,868
01131	Growing of taro	93,219,840	30,993,088	62,226,752	19,524,877	0	42,701,875
01132	Growing of cassava	47,751,680	15,243,899	32,507,781	8,173,143	0	24,334,638
01133	Growing of yam	5,197,000	1,460,655	3,736,345	331,967	0	3,404,378
01134	Growing of kumala	9,116,760	3,304,601	5,812,159	811,570	0	5,000,589
01139	Growing of vegetables and melons, roots and tubers not elsewhere specified	62,622,830	26,481,570	36,141,260	5,597,730	457,142	30,086,388
	Growing of sugar cane	142,065,000	60,844,141	81,220,859	9,213,897	11,657,082	60,349,880
01141	Growing of sugar cane	142,065,000	60,844,141	81,220,859	9,213,897	11,657,082	60,349,880
	Growing and curing of tobacco	4,128,000	2,221,257	1,906,743	127,771	0	1,778,972
01151	Growing and curing of tobacco	4,128,000	2,221,257	1,906,743	127,771	0	1,778,972
	Growing of perennial crops	268,093,710	106,503,557	161,590,153	20,537,804	2,465,325	138,587,024
	Growing of tropical and subtropical fruits	26,530,350	7,135,198	19,395,152	1,265,947	0	18,129,205
01221	Growing of bananas	5,378,460	839,275	4,539,185	71,418	0	4,467,767
01222	Growing of pineapples	10,606,800	3,954,126	6,652,674	380,806	0	6,271,868
01223	Growing of mangoes	72,000	15,619	56,381	12,236	0	44,145
01224	Growing of papayas	3,738,890	976,314	2,762,576	266,486	0	2,496,090
01225	Growing of noni	385,000	38,364	346,636	12,949	0	333,687

FSIC 2010		GO	IC	VA	COE	CFC	OS
SUB-CLASS	DESCRIPTION						
01226	Growing of Watermelon	6,349,200	1,311,500	5,037,700	522,052	0	4,515,648
	Growing of citrus fruits	1,918,350	900,114	1,018,236	85,519	0	932,717
01231	Growing of citrus fruits	1,918,350	900,114	1,018,236	85,519	0	932,717
	Growing of other tree and bush fruits and nuts	360,000	69,745	290,255	17,635	0	272,620
01251	Growing of other tree and bush fruits and nuts	360,000	69,745	290,255	17,635	0	272,620
	Growing of oleaginous fruits	17,130,340	4,259,398	12,870,942	2,707,019	698,019	9,465,904
01261	Growing of oleaginous fruits	17,130,340	4,259,398	12,870,942	2,707,019	698,019	9,465,904
	Growing of Beverage crops	21,000	7,007	13,993	4,555	0	9,438
01271	Growing of cocoa	21,000	7,007	13,993	4,555	0	9,438
	Growing of spices, aromatic, drug and pharmaceutical crops	221,715,210	93,932,597	127,782,613	16,360,705	1,758,932	109,662,976
01281	Growing of ginger	7,449,960	3,297,382	4,152,578	721,579	0	3,430,999
01282	Growing of yaqona	213,585,000	90,393,541	123,191,459	15,540,301	1,753,883	105,897,275
01283	Growing of vanilla	288,750	42,005	246,745	13,557	0	233,188
01289	Growing of spices, aromatic, drug and pharmaceutical crops n.e.c	391,500	199,669	191,831	85,268	5,049	101,514
	Plant propagation	418,460	199,498	218,962	96,424	8,374	114,164
01301	Plant propagation	418,460	199,498	218,962	96,424	8,374	114,164
	Animal production	197,142,346	120,881,049	76,261,297	17,361,439	11,438,103	47,461,755
	Raising of cattle and buffaloes	28,463,597	10,019,885	18,443,712	2,948,235	827,795	14,667,682
01411	Raising and breeding of cattle and buffaloes	16,494,700	5,321,038	11,173,662	892,587	596,008	9,685,067
01412	Production of raw cow milk from cows or buffalo	11,968,897	4,698,847	7,270,050	2,055,648	231,787	4,982,615
	Raising of sheep and goats	1,617,000	573,747	1,043,253	75,234	32,642	935,377
01441	Raising and breeding of sheep	777,000	307,863	469,137	39,527	14,068	415,542
01442	Raising of goats	840,000	265,884	574,116	35,707	18,574	519,835
	Raising of swine/pigs	14,690,000	9,038,905	5,651,095	1,001,373	227,087	4,422,635
01451	Raising of swine/pigs	14,690,000	9,038,905	5,651,095	1,001,373	227,087	4,422,635
	Raising of poultry	150,341,749	100,651,177	49,690,572	13,107,915	10,305,946	26,276,711
01461	Raising and breeding of poultry	113,351,254	74,567,302	38,783,952	10,456,085	6,914,429	21,413,438
01462	Production of eggs	36,990,495	26,083,875	10,906,620	2,651,830	3,391,517	4,863,273

FSIC 2010		GO	IC	VA	COE	CFC	OS
SUB-CLASS	DESCRIPTION						
	Raising of other animals	2,030,000	597,335	1,432,665	228,682	44,633	1,159,350
01491	Bee-keeping	2,030,000	597,335	1,432,665	228,682	44,633	1,159,350
	FORESTRY AND LOGGING	55,096,524	20,504,172	34,592,352	7,588,973	3,389,241	23,614,138
02101	Native forest						
02102	Pine						
02103	Mahogany						
02201	Logging	54,570,924	20,355,327	34,215,597	7,548,190	3,389,241	23,278,166
02301	Gathering of non-wood forest products	525,600	148,845	376,755	40,783	0	335,972
	FISHING AND AQUACULTURE	133,208,668	75,227,855	57,980,813	13,592,988	5,477,873	38,909,952
	Fishing	125,849,950	71,994,676	53,855,274	13,050,863	5,320,772	35,483,639
03111	Marine Fishing on a commercial basis						
03121	Freshwater fishing on a commercial basis	93,624,200	61,414,471	32,209,729	7,874,572	3,970,621	20,364,536
03112	Taking of marine crustaceans and molluscs						
03122	Taking of freshwater crustaceans and molluscs	10,773,750	4,193,560	6,580,190	996,998	236,402	5,346,790
03114	Beach-de-mer	2,924,000	2,088,499	835,501	327,951	122,325	385,225
03115	Gathering of other marine organism and materials						
03124	Gathering of freshwater materials	18,528,000	4,298,146	14,229,854	3,851,342	991,424	9,387,088
	Aquaculture	7,358,718	3,233,179	4,125,539	542,125	157,101	3,426,313
03211	Marine aquaculture	5,881,803	2,533,984	3,347,819	337,754	68,155	2,941,910
03222	Freshwater aquaculture	1,476,915	699,195	777,720	204,371	88,946	484,403

3.2 2015 Results compared with 2014 Results

Table B: 2015 Results compared with 2014 Results.

AGGREGATES	2014		2015		Percentage change
	\$	Aggregates expressed as % of GO	\$	Aggregates expressed as % of GO	
AGRICULTURE					
GO	788,193,889		839,798,176		6.55
IC	352,767,337	44.76	371,699,808	44.26	5.37
VA	435,426,552	55.24	468,098,368	55.74	7.50
COE	79,023,983	10.03	82,246,985	9.79	4.08
CFC	27,399,950	3.48	26,017,652	3.10	-5.04
OS	329,002,620	41.74	359,833,721	42.85	9.37
FORESTRY AND LOGGING					
GO	77,849,042		55,096,524		-29.23
IC	33,430,213	42.94	20,504,172	37.22	-38.67
VA	44,418,829	57.06	34,592,352	62.78	-22.12
COE	11,872,218	15.25	7,588,973	13.77	-36.08
CFC	6,397,253	8.22	3,389,241	6.15	-47.02
OS	26,149,358	33.59	23,614,138	42.86	-9.70
FISHING AND AQUACULTURE					
GO	133,605,901		133,208,668		-0.30
IC	71,714,679	53.68	75,227,855	56.47	4.90
VA	61,891,222	46.32	57,980,813	43.53	-6.32
COE	10,955,122	8.20	13,592,988	10.20	24.08
CFC	4,663,911	3.49	5,477,873	4.11	17.45
OS	46,272,189	34.63	38,909,952	29.21	-15.91

The Agriculture VA in 2015 showed an increase of 7.50 percent when compared to the 2014 results. This is due to the increase of 6.55 percent in GO. The Forestry and Logging VA in 2015 showed a decrease of 22.12 percent when compared to the 2014 results. This is due to the decrease of 29.23 percent in GO. The Fishing and Aquaculture VA in 2015 showed a decrease of 6.32 percent when compared to the 2014 results. This is due to the increase of 4.90 percent in IC.

3.3 Value Added, Percentage Change & Per cent Contribution 2014 and 2015

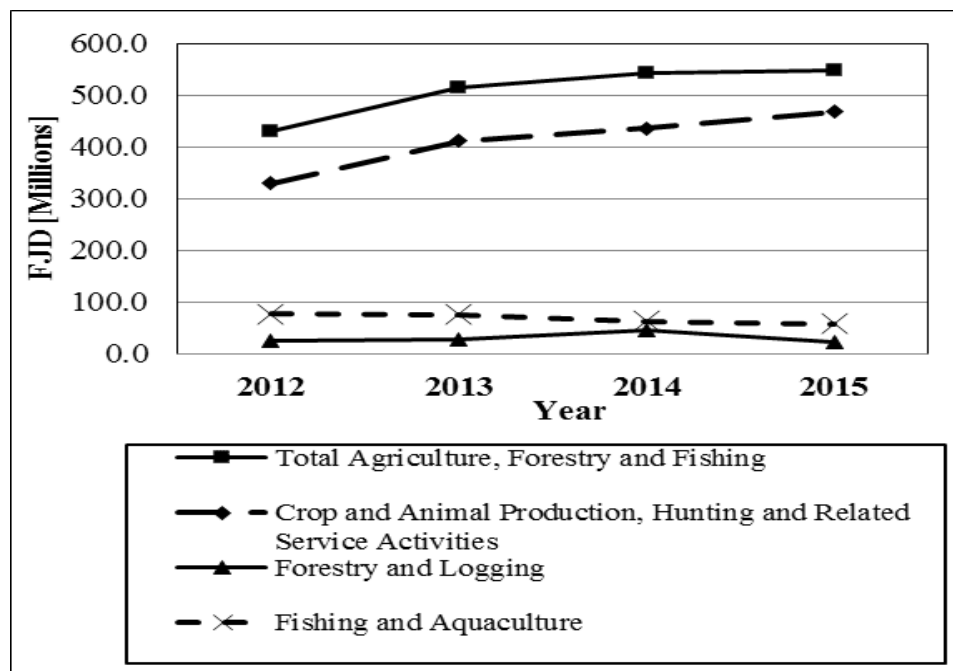
Table C: Value Added 2014 and 2015.

FSIC 2010		2014	2015	Percentage Change	Percent Contribution	
SUB-CLASS	DESCRIPTION	VA \$	VA \$		2014	2015
	TOTAL AGRICULTURE, FORESTRY AND FISHING	541,736,603	560,671,523	3.50	100.00	100.00
	CROP AND ANIMAL PRODUCTION, HUNTING AND RELATED SERVICE ACTIVITIES	435,426,552	468,098,358	7.50	80.38	83.49
	Growing of non-perennial crops	263,497,027	230,246,908	-12.62	48.64	41.07
	Growing of cereals (except rice)leguminous crops and oil seeds	2,840,681	3,063,247	7.83	0.52	0.55
01111	Growing of cereals (except rice)leguminous crops and oil seeds	2,840,681	3,063,247	7.83	0.52	0.55
	Growing of rice	2,828,283	3,631,762	28.41	0.52	0.65
01121	Growing of rice	2,828,283	3,631,762	28.41	0.52	0.65
	Growing of vegetables and melons, roots and tubers	158,735,159	140,424,297	-11.54	29.30	25.05
01131	Growing of taro	63,438,228	62,226,752	-1.91	11.71	11.10
01132	Growing of cassava	43,648,114	32,507,781	-25.52	8.06	5.80
01133	Growing of yam	4,072,656	3,736,345	-8.26	0.75	0.67
01134	Growing of kumala	3,033,383	5,812,159	91.61	0.56	1.04
01139	Growing of vegetables and melons, roots and tubers not elsewhere specified	44,542,778	36,141,260	-18.86	8.22	6.45
	Growing of sugar cane	97,665,752	81,220,859	-16.84	18.03	14.49
01141	Growing of sugar cane	97,665,752	81,220,859	-16.84	18.03	14.49
	Growing and curing of tobacco	1,427,152	1,906,743	33.60	0.26	0.34
01151	Growing and curing of tobacco	1,427,152	1,906,743	33.60	0.26	0.34
	Growing of perennial crops	104,262,046	161,590,153	54.98	19.25	28.82
	Growing of tropical and subtropical fruits	19,652,694	19,395,152	-1.31	3.63	3.46
01221	Growing of bananas	6,598,908	4,539,185	-31.21	1.22	0.81
01222	Growing of pineapples	4,393,536	6,652,674	51.42	0.81	1.19
01223	Growing of mangoes	47,259	56,381	19.30	0.01	0.01
01224	Growing of papayas	4,838,815	2,762,576	-42.91	0.89	0.49
01225	Growing of noni	337,500	346,636	2.71	0.06	0.06

FSIC 2010		2014	2015	Percentage Change	Percent Contribution	
SUB-CLASS	DESCRIPTION	VA \$	VA \$		2014	2015
01226	Growing of watermelon	3,436,676	5,037,700	46.59	0.63	0.90
	Growing of citrus fruits	100,440	1,018,236	913.78	0.02	0.182
01231	Growing of citrus fruits	100,440	1,018,236	913.78	0.02	0.182
	Growing of other tree and bush fruits and nuts	557,140	290,255	-47.90	0.10	0.05
01251	Growing of other tree and bush fruits and nuts	557,140	290,255	-47.90	0.10	0.05
	Growing of oleaginous fruits	11,559,242	12,870,942	11.35	2.13	2.30
01261	Growing of oleaginous fruits	11,559,242	12,870,942	11.35	2.13	2.30
	Growing of Beverage crops	24,975	13,993	-43.97	0.00	0.00
01271	Growing of cocoa	24,975	13,993	-43.97	0.00	0.00
	Growing of spices, aromatic, drug and pharmaceutical crops	72,319,518	127,782,613	76.69	13.35	22.79
01281	Growing of ginger	3,159,988	4,152,578	31.41	0.58	0.74
01282	Growing of yaqona	68,833,120	123,191,459	78.97	12.71	21.97
01283	Growing of vanilla	181,650	246,745	35.84	0.03	0.04
01289	Growing of spices, aromatic, drug and pharmaceutical crops n.e.c	144,760	191,831	32.52	0.03	0.03
	Plant propagation	48,037	218,962	355.82	0.009	0.039
01301	Plant propagation	48,037	218,962	355.82	0.009	0.039
	Animal production	67,667,479	76,261,297	12.70	12.49	13.60
	Raising of cattle and buffaloes	16,535,047	18,443,712	11.54	3.05	3.29
01411	Raising and breeding of cattle and buffaloes	8,251,840	11,173,662	35.41	1.52	1.99
01412	Production of raw cow milk from cows or buffalo	8,283,207	7,270,050	-12.23	1.53	1.30
	Raising of sheep and goats	805,164	1,043,253	29.57	0.15	0.19
01441	Raising and breeding of sheep	229,764	469,137	104.18	0.04	0.08
01442	Raising of goats	575,400	574,116	-0.22	0.11	0.10
	Raising of swine/pigs	3,796,576	5,651,095	48.85	0.70	1.01
01451	Raising of swine/pigs	3,796,576	5,651,095	48.85	0.70	1.01
	Raising of poultry	43,980,692	49,690,572	12.98	8.12	8.86
01461	Raising and breeding of poultry	37,167,343	38,783,952	4.35	6.86	6.92

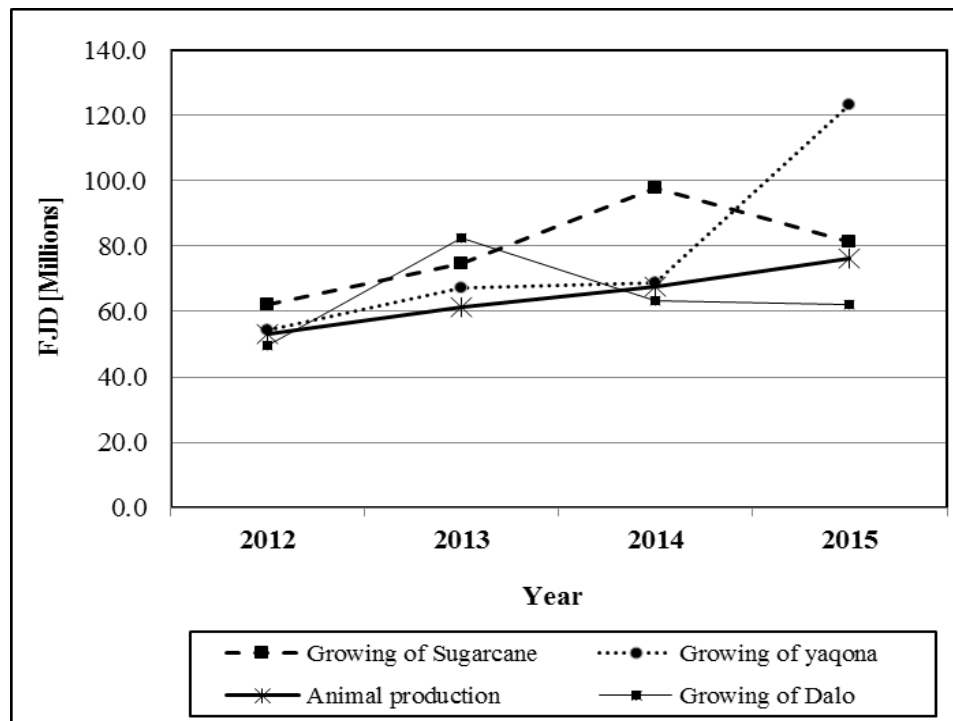
FSIC 2010		2014	2015	Percentage Change	Percent Contribution	
SUB-CLASS	DESCRIPTION	VA \$	VA \$		2014	2015
01462	Production of eggs	6,813,349	10,906,620	60.08	1.26	1.95
	Raising of other animals	2,550,000	1,432,665	-43.82	0.47	0.26
01491	Bee-keeping	2,550,000	1,432,665	-43.82	0.47	0.26
	FORESTRY AND LOGGING	44,418,829	34,592,352	-22.12	8.20	6.17
02101	Native forest					
02102	Pine					
02103	Mahogany					
02201	Logging	43,932,945	34,215,597	-22.12	8.11	6.10
02301	Gathering of non-wood forest products	485,884	376,755	-22.46	0.09	0.07
	FISHING AND AQUACULTURE	61,891,222	57,980,813	-6.32	11.42	10.34
	Fishing	58,158,171	53,855,274	-7.40	10.74	9.61
03111	Marine Fishing on a commercial basis					
03121	Freshwater fishing on a commercial basis	31,786,292	32,209,729	1.33	5.87	5.74
03112	Taking of marine crustaceans and molluscs					
03122	Taking of freshwater crustaceans and molluscs	6,398,179	6,580,190	2.84	1.18	1.17
03114	Beach-de-mer	4,340,700	835,501	-80.75	0.80	0.15
03115	Gathering of other marine organism and materials					
03124	Gathering of freshwater materials	15,633,000	14,229,854	-8.98	2.89	2.54
	Aquaculture	3,733,051	4,125,539	10.51	0.69	0.74
03211	Marine aquaculture	3,644,851	3,347,819	-8.15	0.67	0.60
03222	Freshwater aquaculture	88,200	777,720	781.77	0.02	0.14

Graph 1: Agriculture, Forestry and Fishing Value Added (VA)



The VA of Agriculture, Forestry and Fishing industries shows an increase of 3.5 percent in 2015 when compared to 5.1 percent increase in 2014. Which is driven by 7.5 percent increase in Agriculture, 22.1 percent decrease in forestry & logging and 6.3 percent decrease in Fishing and Aquaculture.

Graph 2: The drivers of Value Added in Agriculture Industry



The VA of Agriculture shows an increase of 7.5 percent in 2015 when compared to 5.7 percent increase in 2014. The major movements in the Agriculture industry in 2015 were as follows:

- Sugar cane decreased by 16.8 percent;
- Yaqona increased by 79.0 percent;
- Dalo decreased by 1.9 percent; and
- Animal production increased by 12.7 percent.

**APPENDIX I: PRODUCTION AND PRICES FOR AGRICULTURE, FORESTRY AND
FISHING**

FSIC 2010		2014			2015		
Sub-Class	Description	Price per tonne	Production in tonnes	GO	Price per tonne	Production in tonnes	GO
CROP AND ANIMAL PRODUCTION, HUNTING AND RELATED SERVICE ACTIVITIES							
01111	Growing of cereals (except rice) leguminous crops and oil seeds						
	Maize	500	976	488,000	1,500	1,073	1,609,500
	Cowpea	1,000	38	38,000	800	118	94,400
	Pulse	998	3,574	3,566,852	950	2,889	2,744,550
01121	Growing of rice						
	Rewa Rice (10% of Production)	750	684	513,000	950	633	601,350
	MPI Rice (90% of Production)	750	6,160	4,620,000	950	5,696	5,411,200
01131	Growing of taro	1,500	62,748	94,122,000	1,530	60,928	93,219,840
01132	Growing of cassava	800	77,721	62,176,800	640	74,612	47,751,680
01133	Growing of yam	1,000	5,474	5,474,000	1,000	5,197	5,197,000
01134	Growing of kumala	500	8,581	4,290,500	1,090	8,364	9,116,760
01139	Growing of vegetables and melons, roots and tubers not elsewhere specified						
	Assorted Vegetables	2,500	24,358	60,895,000	1,970	24,575	48,412,750
	Tomatoes	1,500	242	363,000	2,330	254	591,820
	Egg plant	1,200	1,268	1,521,600	2,500	1,243	3,107,500
	Dalo ni tana	800	3,596	2,876,800	1,130	3,772	4,262,360
	Kawai	1,000	571	571,000	770	932	717,640
	Via	1,000	44	44,000	650	102	66,300
	Breadfruit	500	1,289	644,500	600	1,604	962,400
	Vudi	1,000	5,566	5,566,000	740	3,814	2,822,360
	Tivoli	1,000	1,528	1,528,000	900	1,605	1,444,500
Capsicum	8,000	44	352,000	4,800	49	235,200	
01141	Growing of sugar cane	89	1,832,000	163,048,000	77	1,845,000	142,065,000
01151	Growing and curing of tobacco	13,430	267	3,585,810	12,900	320	4,128,000
01221	Growing of bananas	1,500	5,022	7,533,000	1,020	5,273	5,378,460
01222	Growing of pineapples	1,000	6,538	6,538,000	1,200	8,839	10,606,800
01223	Growing of mangoes	1,000	59	59,000	1,000	72	72,000
01224	Growing of papayas	1,200	5,777	6,932,400	890	4,201	3,738,890
01225	Growing of noni	500	750	375,000	500	770	385,000
01226	Growing of Watermelon	1,000	4,516	4,516,000	1,560	4,070	6,349,200
01231	Growing of citrus fruits	1,500	1,240	1,860,000	1,350	1,421	1,918,350
01251	Growing of other tree and bush fruits and nuts	4,500	161	724,500	3,600	100	360,000
01261	Growing of oleaginous fruits	850	18,108	15,391,800	860	19,919	17,130,340

FSIC 2010		2014			2015		
Sub-Class	Description	Price per tonne	Production in tonnes	GO	Price per tonne	Production in tonnes	GO
01271	Growing of cocoa						
	Cocoa Grade 1 (80% of total Production)	4,500	7	31,500	3,100	6	18,600
	Cocoa Grade 2 (20% of total Production)	2,000	3	6,000	1,200	2	2,400
01281	Growing of ginger						
	Mature	1,000	3,610	3,610,000	1,300	3,971	5,162,300
	Immature	1,300	1,943	2,525,900	1,070	2,138	2,287,670
01282	Growing of yaqona						
	Waka	35,000	2,458	86,030,000	35,000	4,059	142,065,000
	Lewena	30,000	1,413	42,390,000	30,000	2,384	71,520,000
01283	Growing of vanilla	70,000	3	210,000	96,250	3	288,750
01289	Growing of spices, aromatic, drug and pharmaceutical crops n.e.c	4,000	77	308,000	4,500	87	391,500
01301	Plant propagation	1,500	61	91,500	4,270	98	418,460
01411	Raising and breeding of cattle and buffaloes						
	Bulls	4,634	779	3,609,886	4,800	1,150	5,520,000
	Working bullocks	4,000	550	2,200,000	3,900	605	2,359,500
	Steers	4,500	420	1,890,000	4,500	728	3,276,000
	Cows	5,000	689	3,445,000	4,800	645	3,096,000
	Heifers	4,800	280	1,344,000	4,800	359	1,723,200
	Calves	5,000	81	405,000	5,000	104	520,000
01412	Production of raw cow milk from cows or buffalo						
	RCDC Milk Supply to Factory (Litres)	0.78	11,156,737	8,702,255	0.75	8,448,633	6,336,475
	Non-RCDC Milk Supply to Town (Litres)	1.80	3,718,912	6,694,042	2.00	2,816,211	5,632,422
01441	Raising and breeding of sheep	12,000	41	492,000	10,500	74	777,000
01442	Raising of goats	8,000	105	840,000	10,000	84	840,000
01451	Raising of swine/pigs	8500	997	8,474,500	10000	1469	14,690,000
01461	Raising and breeding of poultry						
	Poultry	6,800	18,231	123,070,674	6,800	16,825	113,351,254
	Less Cull Hens (\$ value)		900,126			1,058,746	
01462	Production of eggs						
	Egg	2.90	9,994,132	29,883,109	4.50	7,984,833	36,990,495
	Add Cull Hens (\$ value)		900,126			1,058,746	
01491	Bee-keeping	10,000	340	3,400,000	10,000	203	2,030,000
FORESTRY AND LOGGING							
02101/ 02102/ 02103/ 02201	Native Forest, Pine, Mahogany and Logging						
	Native forest	250	46,774	11,693,500	242	54,349	13,152,458
	Softwood	78	692,464	54,012,192	78	414,117	32,301,126

FSIC 2010		2014			2015		
Sub-Class	Description	Price per tonne	Production in tonnes	GO	Price per tonne	Production in tonnes	GO
	Hardwood	170	58,437	9,934,290	175	52,289	9,150,575
	Sandalwood	160,000	9	1,440,000	160,000	2.00	320,000
	Gathering of non-wood forest products						
	Voivoi	1,200	626	751,200	840	615	516,600
	Masi	1,500	15	22,500	1,000	9	9,000
FISHING AND AQUACULTURE							
	Marine Fishing on a commercial basis and Freshwater fishing on a commercial basis						
03111/ 03121	Albacore	5,700	6,702	38,201,400	5,500	7,855	43,202,500
	Big Eye	5,860	1,560	9,141,600	7,000	1,184	8,288,000
	Yellowfin	5,900	3,558	20,992,200	7,000	3,647	25,529,000
	By-Catch	5,500	1,667	9,168,500	5,100	1,939	9,888,900
	Inshore Fin Fish	8,500	1,597	13,574,500	8,200	819	6,715,800
03112	Taking of marine crustaceans and molluscs						
03122	Taking of freshwater crustaceans and molluscs	4,320	2,485	10,735,200	4,250	2,535	10,773,750
03114	Beach-de-mer	65,000	90	5,850,000	68,000	43	2,924,000
	Gathering of other marine organism and materials			19,300,000			18,528,000
03115	Coral (Pieces)		1,102,671			178,679	
	Ornamental Fish (Pieces)		140,654			265,819	
	Ornamental Invertebrates (Pieces)		29,644			58,980	
	Live Rock (MT)		576,020			525,500	
	Coral Base Rock (MT)		72,643			122,611	
	Marine aquaculture						
03211	Brackish Water Shrimp (MT)	35,001	1	35,001	35,001	3	105,003
	Seaweed (MT)	2,500	105	262,500	2,400	57	136,800
	Black Pearl (Pieces)	450	13,700	6,165,000	470	12,000	5,640,000
	Freshwater aquaculture						
03222	Tilapia/deep sea snapper (MT)	7,500	20	150,000	7,200	86	619,200
	Grass & Silver Carps (Pieces)	5	0	0	5	57,143	285,715
	Prawns (MT)	30,000	1	30,000	26,000	22	572,000
	Fancy & Goldfish (Pieces)	20	0	0	20	0	0

Notes:

1. Production and producer price of the agriculture commodities were sourced from Department of Agriculture.
2. Production and producer price of sugar was sourced from Fiji Sugar Corporation (FSC).
3. Production and producer price of tobacco was sourced from British American Tobacco.
4. Production and producer price of forestry was sourced from Department of Forestry.
5. Production and producer price of fish and fish products were sourced from Department of Fisheries.

Composite Ratio

Sub-Class 01281: Growing of Ginger

	WEIGHT	IC	VA	COE	CFC	OS
		[expressed as percentages of GO]				
Mature: Average		45.8	54.2	8.2	0.0	46.0
	19.9	9.1	10.8	1.6	0.0	9.1
Immature: Average		43.9	56.1	22.9	0.0	33.2
	80.1	35.2	45.0	8.1	0.0	2.7
2015 Composite Ratios		44.3	55.7	9.7	0.0	46.1
2014 Composite Ratios		48.5	51.5	14.9	0.0	36.6
Absolute Change		-4.2	4.2	-5.2	0.0	9.5

Sub-Class 02101: Native Forest

02102: Pine

02103: Mahogany

02201: Logging

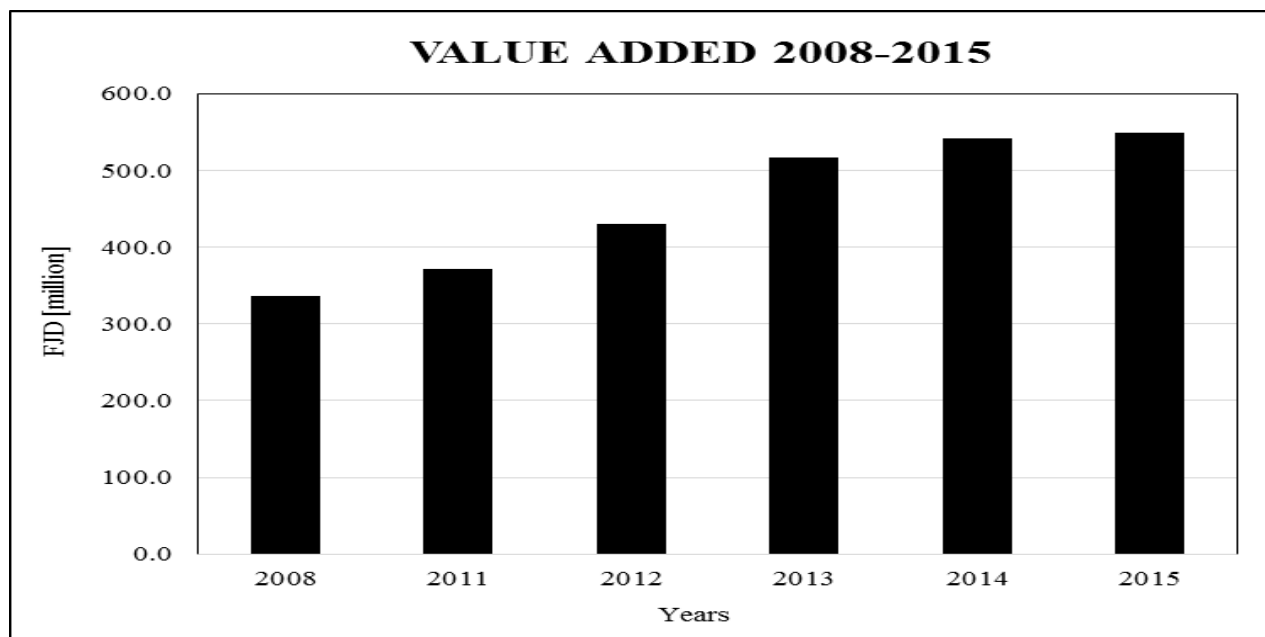
	WEIGHT	IC	VA	COE	CFC	OS
		[expressed as percentages of GO]				
Indigenous		44.9	55.1	22.3	11.2	21.6
Exotic	31.9	14.4	17.6	7.1	3.6	6.9
		48.9	51.1	15.5	6.4	29.2
2015 Composite ratios	68.1	33.3	34.8	10.5	4.4	19.9
2014 Composite ratios		47.6	52.4	17.7	7.9	26.8
Absolute Change		43.0	57.0	15.3	8.3	33.4

Sub-Class 03111: Marine fishing on a commercial basis

03112: Freshwater fishing on a commercial basis

	WEIGHT	IC	VA	COE	CFC	OS
		[expressed as percentages of GO]				
Large scale: Average ratio		61.7	38.3	6.5	4.4	27.5
	78.1	48.2	29.9	5.0	3.4	21.5
Small scale: Average ratio		79.6	20.4	15.4	3.8	1.2
	21.9	17.4	4.5	3.4	0.8	0.3
2015 Composite ratio		65.6	34.4	8.4	4.2	21.8
2014 Composite ratio	100.0	65.1	34.9	7.9	4.0	23.0
Absolute Change		0.5	-0.5	0.5	0.2	-1.2

APPENDIX II: VALUE ADDED 2008 - 2015



Major Events of the Industry

- 2013 – The revitalization works were done in 2013 for Agriculture, Forestry and Fishing industries to restore the outputs that were destroyed in year 2012 by cyclone Evan.

APPENDIX III: PRIMARY PRODUCTION: SELECTED AGRICULTURAL PRODUCTS

Period	Sugar Cane	Copra	Paddy Rice	Virginia Tobacco	Cocoa	Beef	Pork	Goat	Chicken	Eggs	Fish	Ginger	Yaqona
	[000 tonnes]	[tonnes]	[tonnes]	[tonnes]	[tonnes]	[tonnes]	[tonnes]	[tonnes]	[tonnes]	[tonnes]	[tonnes]	[tonnes]	[tonnes]
	[1]			[2]	[7]	[3]	[3]	[8]	[4]	[9]	[5]	[6]	
Yearly													
1997	3,384	11,551	17,385	215	72	3,279	737	833	9,156	2,629	13,230	2,683	3,310
1998	2,263	17,041	5,092	167	146	3,177	778	875	7,775	4,103	13,920	3,500	3,204
1999	3,747	16,511	17,301	233	148	2,984	750	905	8,261	3,137	20,515	2,608	3,216
2000	3,598	13,422	13,170	313	15	2,688	891	934	8,100	3,201	21,078	3,622	3,082
2001	3,077	16,553	14,612	390	5	2,874	673	971	8,237	2,668	18,598	1,437	4,575
2002	3,216	14,349	12,852	238	16	2,452	677	762	10,623	2,771	20,687	3,710	4,039
2003	2,817	9,506	15,504	385	15	2,452	780	810	12,165	2,839	15,654	3,290	2,691
2004	2,971	14,805	14,358	224	12	2,233	981	1,158	12,900	2,908	22,973	3,680	2,149
2005	2,826	11,291	15,189	333	15	2,252	1,117	930	12,090	3,791	29,609	3,652	2,259
2006	3,192	11,139	12,732	318	12	2,252	928	946	13,579	3,522	24,661	3,210	1,700
2007	2,513	10,079	14,870	266	14	1,958	973	969	14,413	3,438	9,841	3,111	3,350
2008	2,322	12,583	11,595	257	13	1,866	920	983	14,429	3,401	13,456	2,488	3,286
2009	2,089	10,096	11,637	439	5	1,719	1,128	238	11,866	3,471	13,252	2,787	2,603
2010	1,751	6,496	7,684	452	6	1,761	1,169	227	14,383	5,707	14,435	2,338	2,792
2011	2,115	7,255	7,914	480	1	2,197	1,180	134	20,428	5,473	13,995	2,575	2,227
2012	1,546	13,808	4,701	464	24	2,171	813	170	25,756	3,792	13,698	6,041	3,328
2013	1,610	14,258	6,280	490	23	2,272	1,540	154	17,076	6,719	12,841	5,908	3,733
2014	1,832	18,107	6,843	467	9	2,800	997	105	18,027	7,113	11,498	5,553	3,871
2015	1,845	19,918	6,329	448	8	3,591	1,469	84	23,400	5,541	16,055	6,109	6,442

Notes:

- [1] From 1996 figures relate to calendar year and not seasonal, therefore may not necessarily tie in with sugarcane production data given elsewhere in this report.
- [2] Does not include Virginia tobacco used for twist tobacco.
- [3] For animals killed in slaughter houses only.
- [4] Refers to the output of registered chicken abattoirs only and includes dressed chicken as well as sales of live chickens.
- [5] Estimates of fish caught inside Fiji waters excluding 'subsistence'.
- [6] Includes rejects, planting ginger rhizomes and diseased ones.
- [7] Sales to NATCO
- [8] Includes animals killed in slaughter houses and estimated 'subsistence' production.
- [9] Data on eggs have been revised due to the new weight conversion from 636 grams per dozen to 694 grams per dozen.

Source: Fiji Sugar Corporation, Ministry of Agriculture, Ministry of Fisheries and British American Tobacco.

APPENDIX IV: SUGAR INDUSTRY PRODUCTION AND PRODUCER PRICES

Year/ Season	Number of Contracts/ Growers	Number of Active Growers	Sugar Cane [c] [d]					Input of Cane per Tonne of Sugar	Sugar Production	Molasses Production	Exports of Sugar [a] [b]		
			Area Harvested	Production	Average Production per Hectare	Prices Paid to Growers	Quantity				Value [fob]	Unit Value	
			[000 hectares]	[000 tonnes]	[tonnes/ hectares]	[FJD/ tonnes]	[000 tonnes]				[FJD000]	[FJD/ tonne]	
Yearly													
1996	22,304	20,600	74	4,380	59.2	44.82	9.6	454	186	500	301,731	603	
1997	22,100	20,524	73	3,280	44.9	50.07	9.5	347	139	308	213,449	693	
1998	22,146	19,430	57	2,098	36.8	81.79	8.2	256	96	237	244,246	1,031	
1999	22,178	19,384	65	3,958	60.9	50.76	10.5	377	159	355	263,200	741	
2000	22,179	19,081	66	3,786	57.0	44.01	11.1	341	164	302	237,059	785	
2001	21,882	18,615	66	2,805	42.5	60.80	9.6	293	106	247	225,179	912	
2002	21,253	17,773	82	3,423	42.0	53.80	10.4	330	149	284	234,384	825	
2003	20,693	17,362	61	2,610	42.8	60.12	8.9	294	107	270	225,743	836	
2004	20,492	17,639	61	3,001	49.0	55.48	9.6	314	113	262	209,214	799	
2005	20,290	16,527	58	2,789	47.6	58.13	9.7	289	118	303	223,682	738	
2006	18,636	15,730	58	3,226	55.6	42.83	10.4	310	157	250	215,085	860	
2007	18,691	14,948	54	2,478	45.9	56.00	10.5	237	115	220	185,014	841	
2008	18,683	14,096	51	2,321	45.6	54.00	11.2	208	120	260	248,184	955	
2009	17,762	13,903	49	2,247	45.9	56.59	13.4	168	131	153	146,804	960	
2010	16,827	13,251	45	1,778	39.6	49.16	13.5	132	113	111	77,687	701	
2011	16,259	12,791	46	2,096	45.7	65.67	12.6	167	107	119	122,347	1,024	
2012	15,948	12,848	42	1,546	36.9	81.83	10.0	155	67	147	156,407	1,066	
2013	15,528	12,633	38	1,610	42.1	88.49	9.0	180	59	162	237,284	1,110	
2014	16,348	12,681	38	1,832	47.7	81.01	8.1	226	77	201	145,275	724	
2015	16,387	12,405	41	1,845	44.7	76.66	8.3	222	76	192	148,124	772	

Notes:

[a] In 1998 bulk of the sugar was exported to the European Union markets which paid higher prices.

[b] Relates to seasons.

Source: Fiji Sugar Corporation except for Sugar Exports data.

APPENDIX V: CONCEPTS AND DEFINITIONS

All concepts and definitions used in this report are based upon the recommendations of the United Nations. The major concepts and definitions and their treatment are briefly explained below.

<i>Compensation of Employees</i>	Includes payments, whether in cash or in kind, made by the employer during the inquiry period for the work done to all persons included in the count of employees. It includes all cash payments, commissions, bonuses, cost of living allowances and wages paid during periods of vacation and sick leave, contributions in respect of their social security and pension and payments in kind.
<i>Consumption of Fixed Capital</i>	In theory this is the value of the current replacement cost of fixed assets used up during the accounting period as a result of normal wear and tear. The consumption of fixed capital shown in this report is derived from the information supplied by the firm. This is expected to conform largely to the requirements of Income Tax Act.
<i>Employees</i>	This includes all persons who work in the establishment and receive regular pay and persons working away from the establishment when paid by and under the control of the establishment, including persons on sick leave, holiday or vacation. Also included are salaried managers, and directors of incorporated businesses except when paid solely for their attendance at board of directors meetings. This category excludes working proprietors and unpaid family workers.
<i>Establishment</i>	An establishment can be referred to as an enterprise that engages in one or predominantly one kind of economic activity, at or from one location, for which data are available or can be meaningfully compiled, that allow the calculation of the operating surplus.
<i>Fixed Assets</i>	Fixed assets include the value of all physical assets expected to have a productive life of more than one year and intended for use by the establishment. Included are major additions, alterations and improvements to existing fixed assets that extend their normal economic life or raise their productivity.
<i>Gross Fixed Capital Formation</i>	This is the outlay on new and second-hand durable goods less their sales plus their own account capital construction work done.
<i>Gross Output</i>	This is the gross value of all goods and services produced during the accounting period, the value of own account capital construction and other income.
<i>Intermediate Consumption</i>	Intermediate consumption consists of non-durable goods and services which have a lifetime of use of less than one year. Compensation of employees do not form part of intermediate consumption, but expenditure such as travelling expenses of management personnel are included. Intermediate consumption differs from total purchases of raw materials, fuels etc. by the amount of stock changes of such goods. Valuation of intermediate consumption is at purchasers' value i.e. it is inclusive of all costs incurred by producers in the acquisition of the required goods and services.

<i>Operating Surplus</i>	This is the excess of value added by producers over compensation of employees, consumption of fixed capital and net indirect taxes.
<i>Payments in kind</i>	This is defined as the net cost to the employer of those goods and services furnished to employees free of charge or at markedly reduced cost that are clearly and primarily of benefit to the employees as consumers. The item includes food, beverages, clothing (except uniforms for civilians as these are not worn off-duty) and lodging etc.
<i>Persons Engaged</i>	This is defined as the total number of persons who worked in or for the establishment during the reference period, including working proprietors, active business partners, unpaid family workers and regular paid workers.
<i>Statistical Unit</i>	Statistical unit is the Unit for which information is collected.
<i>Unpaid Family Workers</i>	Unpaid family workers are persons living in the household of any of the proprietors of the owning establishment and working in the establishment without regular pay for at least one third of the working time normal to the establishment.
<i>Value Added</i>	Value added is the difference between the gross output and the intermediate consumption. It provides a useful way of measuring without duplication the economic importance of an industry or industrial sector.
<i>Working Proprietors</i>	Working proprietors are owners of establishments who are actively engaged in the work of the establishment. Excluded are silent or inactive partners.

APPENDIX VI: INDUSTRIAL CLASSIFICATION USED

SECTION A: AGRICULTURE, FORESTRY AND FISHING from the Fiji Standard Industrial Classification 2010, commonly known as FSIC 2010 has been used. FSIC 2010 is based on the International Standard Industrial Classification Rev. 4.

AGRICULTURE, FORESTRY AND FISHING includes the exploitation of vegetal and animal natural resources, comprising the activities of growing of crops, raising and breeding of animals, harvesting of timber and other plants, animals or animal products from a farm or their natural habitats.

DIVISION	GROUP	CLASS	SUB-CLASS	DESCRIPTION
01				<p>CROP AND ANIMAL PRODUCTION, HUNTING AND RELATED SERVICE ACTIVITIES</p> <p>This division includes two basic activities, namely the production of crop products and production of animal products, covering also the forms of organic agriculture, the growing of genetically modified crops and the raising of genetically modified animals. It also includes service activities incidental to agriculture, as well as hunting, trapping and related activities.</p> <p>Group 015 (Mixed farming) breaks with the usual principles for identifying main activity. It accepts that many agricultural holdings have reasonably balanced crop and animal production and that it would be arbitrary to classify them in one category or the other.</p> <p>Agricultural activities exclude any subsequent processing of the agricultural products (classified under division 10 for manufacture of food products; 11 for manufacture of beverages and 12 for manufacture of tobacco products), beyond that needed to prepare them for the primary markets. However, the preparation of products for the primary markets e.g. drying of tobacco leaves is included here.</p> <p>The division excludes field construction (e.g. agricultural land terracing, drainage, preparing rice paddies etc.) classified in section F (Construction) and buyers and cooperative associations engaged in the marketing of farm products classified in section G.</p>
	011			<p>Growing of non-perennial crops</p> <p>This group includes the growing of non-perennial crops, i.e. plants that do not last for more than two growing seasons. Included is the growing of these plants for the purpose of seed production.</p>
		0111	01111	<p>Growing of cereals (except rice) leguminous crops and oil seeds</p> <p>This sub-class includes all forms of growing of cereals e.g. maize grains, leguminous crops e.g. beans and lentils and oil seeds e.g. groundnuts in open fields, including those considered organic farming and the growing of genetically modified crops. The growing of these crops is often combined within agricultural units.</p> <p>This sub-class excludes: -growing of maize for fodder, see 01191 -growing of edible nuts, see 01251</p>

DIVISION	GROUP	CLASS	SUB-CLASS	DESCRIPTION
		0112	01121	Growing of rice This sub-class includes growing of rice (including organic farming and the growing of genetically modified rice)
		0113		Growing of vegetables and melons, roots and tubers
			01131	Growing of taro This sub-class includes growing of taro.
			01132	Growing of cassava This sub-class includes growing of cassava
			01133	Growing of yam This sub-class includes growing of yam
			01134	Growing of kumala This sub-class includes growing of kumala
			01139	Growing of vegetables and melons, roots and tubers n.e.c. This sub-class includes: -growing of leafy or stem vegetables such as cabbages, cauliflower, lettuce, spinach and other leafy or stem vegetables -growing of fruit bearing vegetables such as cucumbers, eggplants (aubergines), tomatoes and other melons and fruit-bearing vegetables -growing of root, bulb or tuberous vegetables such as carrots, turnips, garlic, onions (incl. shallots), other alliaceous vegetables and other root, bulb or tuberous vegetables -growing of mushrooms -growing of vegetable seeds -growing of other vegetables -growing of roots and tubers This sub-class excludes: -growing of watermelons, see 01226 -growing of mushroom spawn, see 01301 -growing of chilies and peppers (capsicum) and other spices and aromatic crops, see 01289
		0114	01141	Growing of sugar cane This sub-class includes growing of sugar cane.
		0115	01151	Growing and curing of tobacco This sub-class includes growing of unmanufactured tobacco. Preliminary processing e.g. drying of tobacco leaves is included.
		0116	01161	Growing of fibre crops

DIVISION	GROUP	CLASS	SUB-CLASS	DESCRIPTION
				This sub-class includes growing of cotton or other vegetable textile fibres.
		0119	01191	<p>Growing of other non-perennial crops</p> <p>This sub-class includes the growing of non-perennial crops n.e.c. such as</p> <ul style="list-style-type: none"> -growing of fodder roots, clover, alfalfa, maize and other grasses, forage kale and similar forage products -growing of seeds of forage plants -growing of flowers, including production of cut flowers and flower buds -growing of flower seeds <p>This sub-class excludes:</p> <ul style="list-style-type: none"> -growing of sunflower seeds, see 01111 -growing of non-perennial spice, aromatic, drug and pharmaceutical crops, see 01289
	012			<p>Growing of perennial crops</p> <p>This sub-group includes the growing of perennial crops, i.e. plants that lasts for more than two growing seasons, either dying back after each season or growing continuously. Included is the growing of these plants for the purpose of seed production.</p>
		0112	01121	<p>Growing of grapes</p> <p>This sub-class includes:</p> <ul style="list-style-type: none"> -growing of wine grapes and table grapes in vineyards
		0122		Growing of tropical and subtropical fruits
			01221	<p>Growing of bananas</p> <p>This sub-class includes growing of bananas</p>
			01222	<p>Growing of pineapples</p> <p>This sub-class includes growing of pineapples</p>
			01223	<p>Growing of mangoes</p> <p>This sub-class includes growing of mangoes</p>
			01224	<p>Growing of papayas</p> <p>This sub-class includes growing of papayas</p>
			01225	<p>Growing of noni</p> <p>This sub-class includes growing of noni.</p>
			01226	<p>Growing of watermelon</p> <p>This sub-class includes growing of watermelon.</p>

DIVISION	GROUP	CLASS	SUB-CLASS	DESCRIPTION
			01229	Growing of tropical and subtropical fruits n.e.c. This sub-class includes growing of tropical and subtropical fruits e.g. avocados and other tropical and subtropical fruits
		0123	01231	Growing of citrus fruits This sub-class includes growing of oranges and other citrus fruit.
		0125	01251	Growing of other tree and bush fruits and nuts This sub-class includes: -growing of berries: -growing of fruit seeds -growing of edible nuts e.g. peanuts -growing of other tree and bush fruits: This sub-class excludes: -growing of coconuts, see 01261
		0126	01261	Growing of oleaginous fruits This sub-class includes growing of oleaginous fruits e.g. coconuts and other oleaginous fruits This sub-class excludes: -growing of soya beans, groundnuts and other oil seeds, see 01111
		0127		Growing of beverage crops
			01271	Growing of cocoa This sub-class includes growing of cocoa
			01272	Growing of coffee This sub-class includes growing of coffee
		0128		Growing of spices, aromatic, drug and pharmaceutical crops
			01281	Growing of ginger This sub-class includes growing of ginger.
			01282	Growing of yaqona This sub-class includes growing of yaqona.
			01283	Growing of vanilla This sub-class includes growing of vanilla
			01289	Growing of spices, aromatic, drug and pharmaceutical crops n.e.c. This sub-class includes: -growing of perennial and non-perennial spices and aromatic crops not

DIVISION	GROUP	CLASS	SUB-CLASS	DESCRIPTION
				elsewhere specified e.g. pepper (piper), chilies and peppers (capsicum) and other spices and aromatic crops -growing of drug and narcotic crops -growing of plants used primarily in perfumery, in pharmacy or for insecticidal, fungicidal or similar purposes
		0129	01299	Growing of other perennial crops This sub-class includes growing of vegetable materials of a kind used primarily for plaiting
		0130	01301	Plant propagation This sub-class includes the production of all vegetative planting materials including cuttings, suckers and seedlings for direct plant propagation or to create plant grafting stock into which selected scion is grafted for eventual planting to produce crops e.g. growing of plants for planting; growing of plants for ornamental purposes, including turf for transplanting; growing of live plants for bulbs, tubers and roots; cuttings and slips; mushroom spawn; operation of tree nurseries, except forest tree nurseries This sub-class excludes: -growing of plants for the purpose of seed production, see groups 011 and 012 -operation of forest tree nurseries, see class 0210
	014			Animal production This group includes raising (farming) and breeding of all animals, except aquatic animals. This group excludes: -breeding support services, such as stud services, see 01619 -farm animal boarding and care, see 01619 -production of hides and skins from slaughterhouses, see 10102
		0141		Raising of cattle and buffaloes
			01411	Raising and breeding of cattle and buffaloes This sub-class includes raising and breeding of cattle and buffaloes This sub-class excludes: -production of raw milk, see 01412
			01412	Production of raw cow milk from cows or buffaloes This sub-class includes production of raw cow milk from cows or buffaloes This sub-class excludes: -processing of milk, see 10501
		0142	01421	Raising of horses and other equines

DIVISION	GROUP	CLASS	SUB-CLASS	DESCRIPTION
				This sub-class includes raising and breeding of horses (including racing horses) This sub-class excludes: -operation of racing and riding stables, see 93199
		0144		Raising of sheep and goats
			01441	Raising and breeding of sheep This sub-class includes raising and breeding of sheep This sub-class excludes: -sheep shearing on a fee or contract basis, see 01619 -production of pulled wool, see 10102
			01442	Raising of goats This sub-class includes raising and breeding of goats
		0145	01451	Raising of swine/pigs This sub-class includes raising and breeding of swine (pigs)
		0146		Raising of poultry
			01461	Raising and breeding of poultry This sub-class includes fowls of the species Gallus domesticus (chickens and capons), ducks, geese, turkeys and guinea fowls This sub-class excludes: -production of feathers or down, see 10101
			01462	Production of eggs This sub-class includes -poultry farming for production of eggs -operation of poultry hatcheries
		0149		Raising of other animals
			01491	Bee-keeping This sub-class includes the production of honey.
			01492	Other animal farming; production of animal products n.e.c This sub-class includes raising of live animals and production of animal products n.e.c.
		0150	01501	Mixed farming

DIVISION	GROUP	CLASS	SUB-CLASS	DESCRIPTION
				<p>This sub-class includes the combined production of crops and animals without a specialized production of crops or animals. The size of the overall farming operation is not a determining factor. If either production of crops or animals in a given unit exceeds 66 per cent or more of standard gross margins, the combined activity should not be included here, but allocated to crop or animal farming.</p> <p>This sub-class excludes: -mixed crop farming, see groups 011 and 012 -mixed animal farming, see group 014</p>
	016	0161	01619	<p>Support activities to agriculture and post-harvest crop activities</p> <p>This sub-class includes:</p> <ul style="list-style-type: none"> -support activities for crop production <ul style="list-style-type: none"> -agricultural activities on a fee or contract basis e.g. preparation of fields, establishing a crop, treatment of crops, crop spraying, including by air, trimming of fruit trees and vines, transplanting of rice, thinning of beets, harvesting and pest control (including rabbits) in connection with agriculture -operation of agricultural irrigation equipment -provision of agricultural machinery with operators and crew -maintenance of land to keep it in good condition for agricultural use -support activities for animal production <ul style="list-style-type: none"> -agricultural activities on a fee or contract basis e.g. activities to promote propagation, growth and output of animals, herd testing services, droving services, poultry caponizing, coop, cleaning etc., activities related to artificial insemination, stud services, sheep shearing, farm animal boarding and care -activities of farriers -post-harvest crop activities <ul style="list-style-type: none"> -preparation of crops for primary markets, i.e. cleaning, trimming, grading, disinfecting -cotton ginning -preparation of tobacco leaves -preparation of cocoa beans -waxing of fruit -sun-drying of fruit and vegetables -seed processing for propagation <ul style="list-style-type: none"> -all post-harvest activities aimed at improving the propagation quality of seed through the removal of non-seed materials, undersized, mechanically or insect damaged and immature seeds as well as removing the seed moisture to a safe level for seed storage. This activity includes the drying, cleaning, grading and treating of seeds until they are marketed. The treatment of genetically modified seeds is included here. <p>This sub-class excludes: -activities of agronomists and agricultural economists, see 74909 -landscape gardening, planting, see 81301 -maintenance of land to keep it in good ecological condition, see 81301 -organization of agricultural shows and fairs, see 82301 -activities of farriers</p>

DIVISION	GROUP	CLASS	SUB-CLASS	DESCRIPTION
				-veterinary activities, see 75001 -vaccination of animals, see 75001 -renting of animals (e.g. herds), see 77301 -pet boarding, see 96099 -preserving of fruit and vegetables, including dehydration by artificial means, see 10301 -stemming and redrying of tobacco, see 12001
	017	0170	01701	Hunting, trapping and related service activities This sub-class includes: -hunting and trapping on a commercial basis -taking of animals (dead or alive) for food, fur, skin, or for use in research, in zoos or as pets -production of fur skins, reptile or bird skins from hunting or trapping activities This sub-class excludes: -hunting for sport or recreation and related service activities, see 93199
02				<u>FORESTRY AND LOGGING</u> This division includes the production of round wood for the forest-based manufacturing industries as well as the extraction and gathering of wild growing non-wood forest products. Besides the production of timber, forestry activities result in products that undergo little processing, such as fire wood, charcoal, wood chips and round wood used in an unprocessed form (e.g. pit-props, pulpwood etc.). These activities can be carried out in natural or planted forests.
	021	0210		Silviculture and other forestry activities This group includes the growing of standing timber: planting, replanting, transplanting, thinning and conserving of forests and timber tracts; growing of coppice, pulpwood and fire wood and operation of forest tree nurseries
			02101	Native Forest This sub-class includes growing of standing timber and operation of native forest tree nurseries. This sub-class excludes: -operation of tree nurseries, see 01301 -gathering of wild growing non-wood forest products, see 02301 -production of wood chips and particles, see 16101
			02102	Pine This sub-class includes growing of standing timber operation of pine tree nurseries. This sub-class excludes: -operation of tree nurseries, see 01301

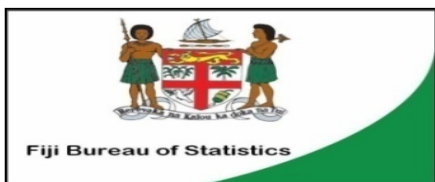
DIVISION	GROUP	CLASS	SUB-CLASS	DESCRIPTION
				-gathering of wild growing non-wood forest products, see 02301 -production of wood chips and particles, see 16101
			02103	Mahogany This sub-class includes growing of standing timber and operation of mahogany tree nurseries. This sub-class excludes: -operation of tree nurseries, see 01301 -gathering of wild growing non-wood forest products, see 02301 -production of wood chips and particles, see 16101
	022	0220	02201	Logging This sub-class includes: -production of round wood for forest-based manufacturing industries -production of round wood used in an unprocessed form such as pit-props, fence posts and utility poles -gathering and production of fire wood -production of charcoal in the forest (using traditional methods) The output of this activity can take the form of logs, chips or fire wood. This sub-class excludes: -growing of standing timber: planting, replanting, transplanting, thinning and conserving of forests and timber tracts, see class 0210 -gathering of wild growing non-wood forest products, see 02301 -production of wood chips and particles, not associated with logging, see 16101
	023	0230	02301	Gathering of non-wood forest products This sub-class includes the gathering of non-wood forest products and other plants growing in the wild e.g. nuts, lac and resins, mushrooms, truffles, berries, balata and other rubber-like gums, cork, balsams, vegetable hair, eelgrass, acorns, horse chestnuts, mosses and lichens This sub-class excludes: -growing of mushrooms or truffles, see 01139 -growing of berries or nuts, see 01251 -gathering of fire wood, see 02201
	024	0240	02401	Support services to forestry This sub-class includes -forestry service activities: -forestry inventories -forest management consulting services -timber evaluation -forest fire fighting and protection -forest pest control -logging service activities: -transport of logs within the forest

DIVISION	GROUP	CLASS	SUB-CLASS	DESCRIPTION
				This sub-class excludes: -operation of forest tree nurseries, see class 0210
03				FISHING AND AQUACULTURE This division includes capture fishery and aquaculture, covering the use of fishery resources from marine, brackish or freshwater environments, with the goal of capturing or gathering fish, crustaceans, molluscs and other marine organisms and products (e.g. aquatic plants, pearls, sponges etc). Also included are activities that are normally integrated in the process of production for own account (e.g. seeding oysters for pearl production).
	031			Fishing This group includes capture fishery, i.e. the hunting, collecting and gathering activities directed at removing or collecting live wild aquatic organisms (predominantly fish, molluscs and crustaceans) including plants from the oceanic, coastal or inland waters for human consumption and other purposes by hand or more usually by various types of fishing gear such as nets, lines and stationary traps. Such activities can be conducted on the intertidal shoreline (e.g. collection of molluscs such as mussels and oysters) or shore based netting, or from home-made dugouts or more commonly using commercially made boats in inshore, coastal waters or offshore waters. Unlike in aquaculture (group 032), the aquatic resource being captured is usually common property resource irrespective of whether the harvest from this resource is undertaken with or without exploitation rights. Such activities also include fishing restocked water bodies.
		0311		Marine fishing This class includes activities of vessels engaged in fishing in ocean and coastal waters. This class excludes: -capturing of marine mammals see 01701 -processing of fish, crustaceans and molluscs on factory ships or in factories ashore, see 10201 -fishing inspection, protection and patrol services, see 84231 -fishing practiced for sport or recreation and related services, see 93299 -operation of sport fishing preserves, see 93299
			03111	Marine fishing on a commercial basis This sub-class includes fishing on a commercial basis in ocean and coastal waters.

DIVISION	GROUP	CLASS	SUB-CLASS	DESCRIPTION
			03112	Taking of marine crustaceans and molluscs This sub-class includes taking of marine crabs, prawns, etc in ocean and coastal waters.
			03113	Taking of marine aquatic animals: turtles, sea squirts, tunicates, sea urchins etc This sub-class includes turtle hunting, fishing for octopus etc in ocean and coastal waters.
			03114	Beach-de-mer diving This sub-class includes beach-de-mer diving in ocean and coastal waters.
			03115	Gathering of other marine organisms and materials This sub-class includes gathering of other marine organisms and materials: natural pearls, sponges, coral and algae in ocean and coastal waters.
		0312		Freshwater fishing This class includes fishing in inland waters. This class excludes: -fishing inspection, protection and patrol services, see 84231 -fishing practiced for sport or recreation and related services, see 93299 -operation of sport fishing preserves, see 93299
			03121	Freshwater fishing on a commercial basis This sub-class includes fishing on a commercial basis in inland waters.
			03122	Taking of freshwater crustaceans and molluscs This sub-class includes taking of freshwater crabs, prawns, kai etc in inland waters
			03123	Taking of freshwater aquatic animals This sub-class includes taking of freshwater aquatic animals in inland waters
			03124	Gathering of freshwater materials This sub-class includes gathering of freshwater organisms and materials: pearls, etc in inland waters
	032			Aquaculture This group includes aquaculture (or aqua farming), i.e. the production process involving the culturing or farming (including harvesting) of aquatic organisms

DIVISION	GROUP	CLASS	SUB-CLASS	DESCRIPTION
				<p>(fish, molluscs, Crustaceans, plants, etc) using techniques designed to increase the production of the organisms in question beyond the natural capacity of the environment (for example regular stocking, feeding and protection from predators).</p> <p>Culturing/farming refers to the rearing up to their juvenile and/or adult phase under captive conditions of the above organisms. In addition, aquaculture also encompasses individual, corporate or state ownership of the individual organisms throughout the rearing or culture stage, up to and including harvesting.</p>
		0321	03211	<p>Marine aquaculture</p> <p>This sub-class includes:</p> <ul style="list-style-type: none"> -fish farming in sea water including farming of marine ornamental fish -production of bivalve spat (oyster mussel etc.), lobster lings, shrimp post-larvae, fish fry and fingerlings -growing of laver and other edible seaweeds -culture of crustaceans, bivalves, other molluscs and other aquatic animals in sea water -aquaculture activities in brackish waters -aquaculture activities in salt water filled tanks or reservoirs -operation of fish hatcheries (marine) -operation of marine worm farms <p>This sub-class excludes:</p> <ul style="list-style-type: none"> -operation of sport fishing preserves, see 93299
		0322	03222	<p>Freshwater aquaculture</p> <p>This sub-class includes:</p> <ul style="list-style-type: none"> -fish farming in freshwater including farming of freshwater ornamental fish -culture of freshwater crustaceans, bivalves, other molluscs and other aquatic animals -operation of fish hatcheries (freshwater)

APPENDIX VII: SAMPLE QUESTIONNAIRE



Ratu Sukuna House, Mac Arthur Street, Victoria Parade, Suva

*P O Box 2221
Government Buildings
Suva
FIJI*

*Telephone: [679] 331 5822
Fax No. [679] 330 3656
E-mail: info@statsfiji.gov.fj
Website: www.statsfiji.gov.fj*

CONFIDENTIAL

2015 AGRICULTURE, FORESTRY AND FISHING CASE STUDY

Please specify the name and address.

Dear Sir\Madam,

PURPOSE: The study provides an important means of assessing the contribution this sector makes to the economy of Fiji, and indicates the changing composition and structure of the industry. The results of the Study are used by the Fiji Bureau of Statistics in the estimation of the Gross Domestic Product / National Income of Fiji and in the provision of other key indicators.

REFERENCE PERIOD: Reference period is the calendar year 2015. If your accounting year is different provide information approximating closest to the calendar year 2015.

COMPULSORY REQUIREMENT: The Study is conducted under the provisions of the Statistics Act 1961(Cap 71). In accordance with Section 8 subsection 2 of this Act you are required to provide the correct data during the interview. Failure to provide data could result in legal action without further notice.

CONFIDENTIALITY OF INFORMATION: Information supplied will be used by the department solely for the preparation of national statistics. Any release of information will be in accordance with the Statistics Act, which prohibits the release of data in a manner that identifies individual establishments or enterprises.

HELP AVAILABLE: Please contact Mr. Pritesh Gounder on email pgounder@statsfiji.gov.fj or telephone 331 5822 (ext. 386 242) or direct line 323 0842.

Epeli Waqavonovono [Mr]
Government Statistician

QUESTIONNAIRE

All relevant questions – QUESTIONS THAT ARE RELEVANT TO YOUR OPERATIONS – must be answered with clear and correct figures. Estimates will be accepted where actual data are not available. Values are to be expressed in **Fiji dollars**. **Note:** Farm gate price is to be included.

A PARTICULARS OF THE ESTABLISHMENT

NAME OF ORGANISATION:

LOCATION ADDRESS:

1. **NATURE OF WORK** : Please give a brief description of the main activity and any other substantial activity of the establishment covered by this return :

Main activity :

Other activity :

2. EMPLOYMENT

NUMBER EMPLOYED

a) Operatives (wage earners)

b) Other (salary earners)

c) Working proprietaries

d) Unpaid family workers

Total

B OUTPUT

3. VALUE OF PRODUCTION DURING THE ACCOUNTING YEAR

a)	DESCRIPTION OF PRODUCT	QUANTITY PRODUCED (TONNES)	PRICE PAID TO GROWERS (\$/TONNE)	TOTAL VALUE (\$)
		A	B	A*B
	TOTAL			
b)	Value of goods used for own consumption (\$)			

4. OTHER INCOME EARNED DURING THE YEAR		VALUE (\$)
a)	Minor repairs & maintenance to plant, machinery, transport, buildings etc.	
b)	Value of own account capital construction work done	
c)	Rental income received for the hire of building; plant machinery transport etc.	
d)	Insurance claim received	
e)	Interest received	
f)	Gain on sale of fixed assets	
g)	Others (specify)	
	Total	

5.	TOTAL INCOME DERIVED DURING THE YEAR (QUESTIONS 3 AND 4)	\$
----	-----------------------------------------------------------------	----

C INPUT

6. PURCHASE OF MATERIALS DURING THE YEAR		VALUE (\$)
	Purchase of materials for use in the business:	
	E.g. For crops:	
	a) Seeds	
	b) Fertilizer	
	c) Chemicals	
	d) Weedicides	
	For livestock and poultry:	
	a) Feeds	
	TOTAL	

F FIXED CAPITAL ASSETS

12		VALUE (\$)						Closing book value
		Opening book value	Purchase of new and second hand goods at cost		Own account Constr.	Sale of capital Assets	Depreciation	
			Locally	From abroad				
-1	-2	-3	-4	-5	-6	-7		
a)	Land							
b)	Land development & improvement							
c)	Buildings							
d)	Plant and Machinery							
e)	Furniture, fixtures and office equipment							
f)	Transport vehicle and related equipment							
g)	Others (specify) :							
	Eg. Planting of new trees to produce fruits							
	Purchase of cows and hens to produce milk & eggs respectively							
	Major constructions, reconstructions and extensions to existing fixed assets							
TOTAL								

Person we should contact if any queries arise regarding this form:

Name: _____

Telephone: _____

Facsimile: _____

Email: _____

Signature: _____

Date: _____

THANK YOU FOR COMPLETING THE QUESTIONNAIRE