

STATISTICAL NEWS



FBoS Release No. 37, 2025

23rd June, 2025

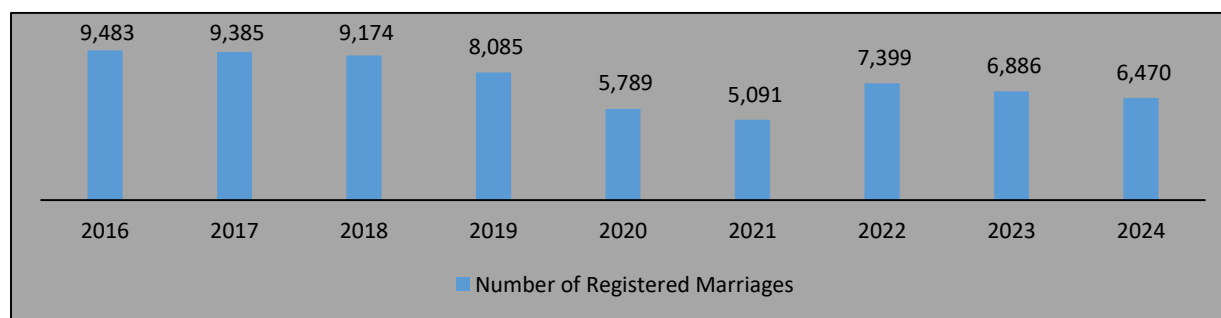
EXPERIMENTAL RELEASE ON MARRIAGE PATTERNS, TRENDS and DIFFERENTIALS IN FIJI: 2016 - 2024

This release provides marriage statistics from the data recorded by the Civil Registration Office at the Fiji Ministry of Justice from 2016 to 2024. In Fiji, marriages are legally recognized unions between two individuals, typically governed by the **Marriage Act**¹. Marriages can be either civil or religious, and the requirements, processes, and legal framework for marriage are overseen by the **Fiji Registrar General's Office**¹.

MARRIAGES

Marriage is an important social practice and a key determinant of fertility. The number of persons who enter into a union, the ages at which they marry, the proportion of persons who end up not marrying, and the timing and intensity of marriage dissolution due to widowhood and divorce affect the number of potential mothers and children born in the country. Although people living in a de facto relationship as husband and wife are regarded as married for demographic accounting (reproduction), irrespective of whether or not they are in a legally sanctioned union, only marriages that had been legally registered have been compiled and presented in this monograph.

Figure 1: Total Registered Marriages



Source: Ministry of Justice

¹ Marriage laws in Fiji are governed by the Marriage Act 1968 and Marriage Regulations 1968

As shown in figure 1, a total of 6,470 marriages were registered in Fiji in 2024. However, overall, the intensity of marriage has consistently declined over time, from about 9,500 in 2016 to about 8,000 in 2019. It hit its lowest point at the peak of the COVID-19 pandemic (reaching between 5,000-6,000 annual marriages) due to restriction on social gatherings. Although there has been a slight recovery since the pandemic, more recent trends follow the long-term decline observed during the pre-pandemic period.

Crude Marriage Rate (CMR)

The Crude Marriage rate (CMR) refers to the number of marriages that occur in a country during a given year per 1,000 mid-year total population of the given geographical area during the same year. This includes both newly married couples and remarriages. The table below gives the total number of registered marriages between 2016 and 2024, irrespective of previous marital status. CMR shows a general declining trend over the years, starting from 10.8 in 2016 and dropping to 7.2 in 2024. A sharp drop in CMR occurred between 2019 (9.1) and 2021 (5.7), which was likely influenced by the Covid-19 pandemic. The table also indicates that, on average, annually there were some 7 marriages per 1000 people for 2016-2024.

Table 1: Crude Marriage Rate for Mid-year Population

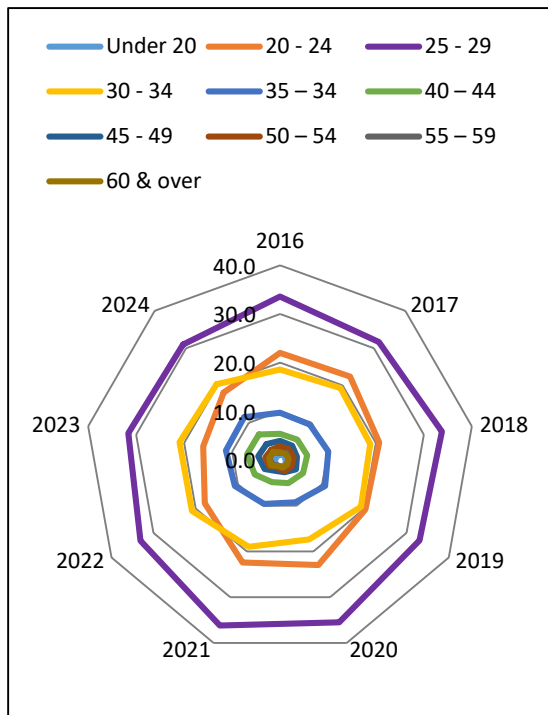
Years	Total Marriages	Midyear Pop Estimation	CMR
2016	9,483	880,400	10.8
2017	9,385	884,887	10.6
2018	9,174	887,099	10.3
2019	8,085	887,121	9.1
2020	5,789	888,289	6.5
2021	5,091	889,567	5.7
2022	7,399	890,654	8.3
2023	6,886	892,153	7.7
2024	6,470	894,007	7.2

Note: Projection is based on the census years, births, deaths and migration.

Age Pattern of Marriage

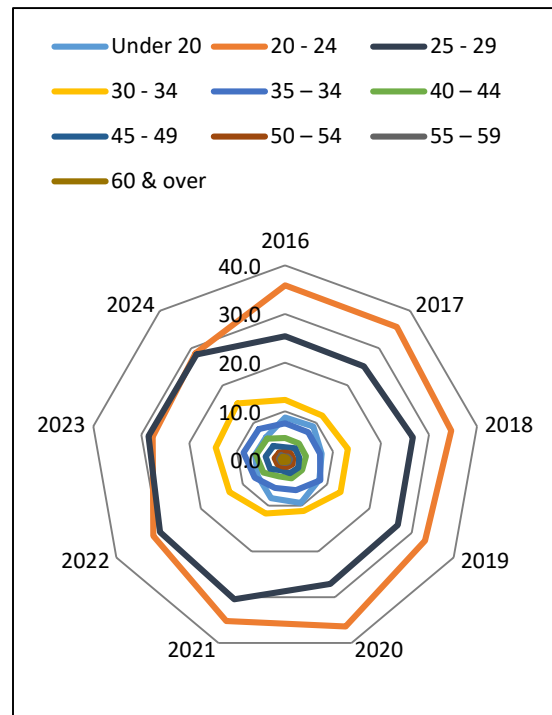
The radar chart in figure 2 illustrates a clear dominance of grooms for 25–29 age group in participation or representation over the nine-year period, suggesting a strong engagement or presence from this demographic. The 20–24 and 30–34 age groups also show moderate activity, although significantly lower than the 25–29 groom age group. Therefore figure 3 shows that the 20–24 age group had the highest marriage rates from 2016 to 2024, indicating it as the most common age range for brides. The 25–29 bride age group consistently followed, showing moderate marriage rates, while all other age groups had significantly lower figures. Over time, there appears to be a slight decline in the 20–24 group and a relative rise in the 25–29 and 30–34 bride age groups. Other groom and bride age groups show much smaller values and relatively flat trends, indicating limited and stable involvement over time. This pattern highlights a concentration of activity among younger adults, especially those in their late 20s.

Figure 2: Groom Age Patterns of Marriage



Source: Ministry of Justice

Figure 3: Bride Age Patterns of Marriage

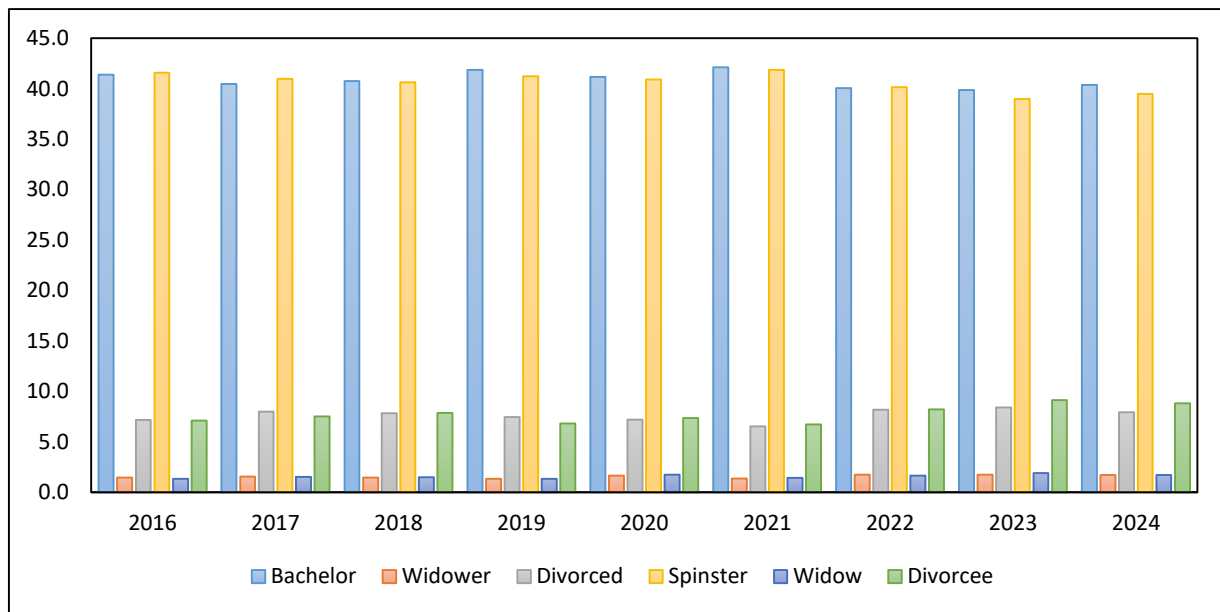


Source: Ministry of Justice

Patterns of First Marriages and Remarriages

Figure 4 shows, majority of both grooms and brides were previously unmarried, with bachelors and spinsters consistently making up the largest percentages, averaging around 40–42%. Marriages involving divorced individuals showed a slight upward trend, particularly among brides (from 6.7% to 9.1%). The percentage of widowed individuals getting married remained low and relatively stable, typically under 2% for both grooms and brides.

Figure 4: Share of first marriages as a percentage of all marriages by gender [2016 – 2024]

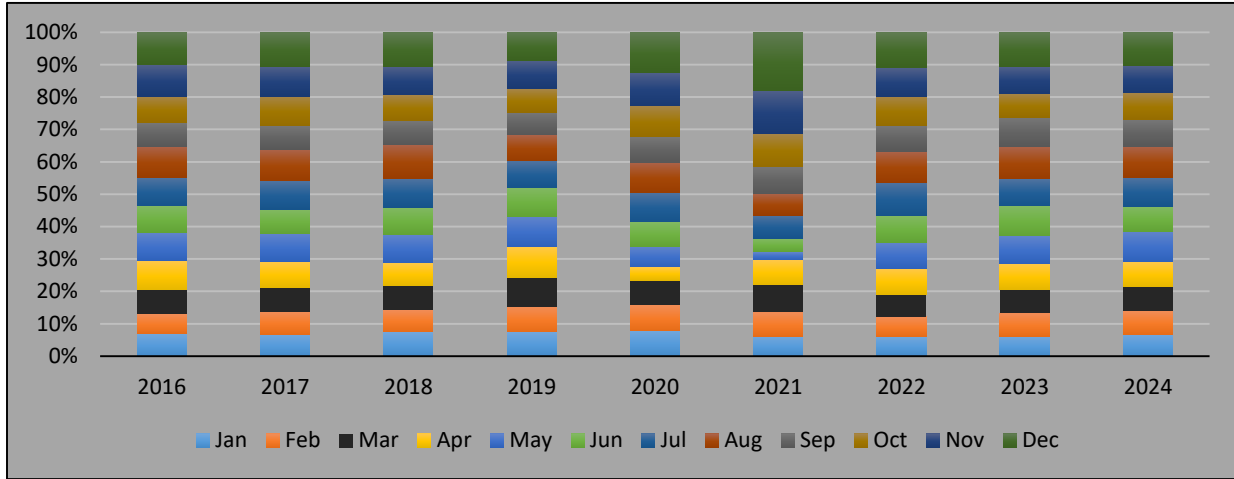


Source: Ministry of Justice

Registered Marriages by Month

Figure 5 shows, monthly distributions across the years 2016 to 2024. A notable increase in the proportion for December 2021 is observed. The increase likely corresponds to the easing of COVID-19 restrictions toward the end of that year, enabling greater activity during the holiday season. By contrast, months like April to June show reduced activity in 2020 and 2021, reflecting periods of stricter lockdown measures. Overall, the trend highlights how pandemic-related strategy changes significantly influenced social trends, particularly in 2021.

Figure 5: Marriages Proportions by Month [2016 – 2024]

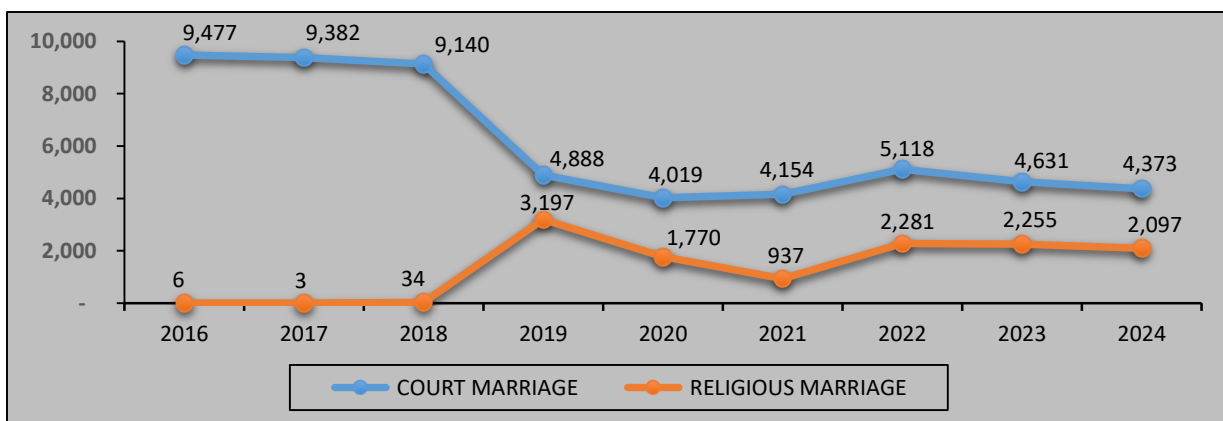


Source: Ministry of Justice

Marriage Type

In Fiji, the legal recognition of marriages has evolved over time, particularly concerning non-court and religious marriages. Figure 6 shows from 2016 to 2018, nearly all marriages were court marriages, with religious marriages making up a small fraction. However, starting in 2019, there was a significant shift, with religious marriages gaining currency and making up to a third of total marriages in recent years. However, despite fluctuations over the years, court marriages still remain dominant overall, accounting for about 81.4 % of all marriages from 2016 to 2024 while religious marriage accounted for the remaining total.

Figure 6: Marriage Type [2016 – 2024]



Source: Ministry of Justice

Appendix: additional tables:

Table 1: Total number and percentage change of registered marriages;

Table 2: Registered marriages by groom age-group

Table 3: Percentage distribution of registered marriages by groom age-group

Table 4: Registered marriages by bride age-group

Table 5: Percentage distribution of registered marriages by bride age-group

Table 6: Total number of groom and bride marital status

Table 7: Marital status percentage change on corresponding period in previous year

Table 8: Percentage distribution registered marriage by months

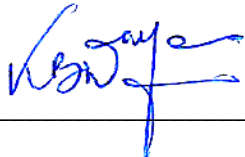
Table 9: Total registered marriage by Months

Table 10: Groom marriage type by age-group

Table 11: Bride marriage type by age-group

We extend our sincere appreciation to the Ministry of Justice, Registrar General Office for their invaluable collaboration on the provision of marriages data. The Statistics for Development Division (SDD) from the Pacific Community (SPC) for their technical assistance and expertise, for providing us with a platform where we were able to gain a lot of knowledge leading to the writing of this release.

For any further enquiries please contact Mr. Sairusi Ketenilagi by email at sketenilagi@statsfiji.gov.fj and Mr. Fiu Penjueli by email at pfiu@statsfiji.gov.fj, or Telephone at 3315822 (ext. 386248), direct line 3230848.



Kemueli Naiqama [Mr.]

Chief Executive – Fiji Bureau of Statistics

Reproduction of Material

Any table or material published in this release may be reproduced and published without the Fiji Bureau of Statistics' prior approval. However, the sources of information should always be identified and acknowledged in all modes of presentation.

Table 1: Total number and percentage change of registered marriages

Year	Number of Registered Marriages	% Change of Registered Marriages
2016	9,483	-2.5
2017	9,385	-1.0
2018	9,174	-2.2
2019	8,085	-11.9
2020	5,789	-28.4
2021	5,091	-12.1
2022	7,399	45.3
2023	6,886	-6.9
2024	6,470	-6.0

Source: Ministry of Justice

Table 2: Registered marriages by groom age-group

Age Group	2016	2017	2018	2019	2020	2021	2022	2023	2024
Under 20	100	118	103	117	81	77	85	72	67
20 - 24	2,086	2,102	1,897	1,637	1,330	1,142	1,320	1,103	1,168
25 - 29	3,182	2,966	3,097	2,674	2,053	1,843	2,451	2,177	2,003
30 - 34	1,760	1,809	1,728	1,553	1,005	964	1,545	1,443	1,312
35 - 39	918	894	926	862	536	490	795	778	744
40 - 44	512	515	520	439	291	248	444	474	441
45 - 49	375	361	322	307	153	121	270	313	277
50 - 54	264	271	260	219	142	81	189	214	177
55 - 59	138	186	156	136	99	60	137	153	138
60 & over	148	163	165	141	99	65	163	159	143
Total	9,483	9,385	9,174	8,085	5,789	5,091	7,399	6,886	6,470

Source: Ministry of Justice

Table 3: Percentage distribution of registered marriages groom by age-group

Age Group	2016	2017	2018	2019	2020	2021	2022	2023	2024
Under 20	1.1	1.3	1.1	1.4	1.4	1.5	1.1	1.0	1.0
20 - 24	22.0	22.4	20.7	20.2	23.0	22.4	17.8	16.0	18.1
25 - 29	33.6	31.6	33.8	33.1	35.5	36.2	33.1	31.6	31.0
30 - 34	18.6	19.3	18.8	19.2	17.4	18.9	20.9	21.0	20.3
35 - 34	9.7	9.5	10.1	10.7	9.3	9.6	10.7	11.3	11.5
40 - 44	5.4	5.5	5.7	5.4	5.0	4.9	6.0	6.9	6.8
45 - 49	4.0	3.8	3.5	3.8	2.6	2.4	3.6	4.5	4.3
50 - 54	2.8	2.9	2.8	2.7	2.5	1.6	2.6	3.1	2.7
55 - 59	1.5	2.0	1.7	1.7	1.7	1.2	1.9	2.2	2.1
60 & over	1.6	1.7	1.8	1.7	1.7	1.3	2.2	2.3	2.2

Source: Ministry of Justice

Table 4: Registered marriages by bride age-group

Age Group	2016	2017	2018	2019	2020	2021	2022	2023	2024
Under 20	828	843	700	656	544	426	483	431	395
20 - 24	3,403	3,350	3,181	2,682	2,105	1,793	2,310	1,901	1,853
25 - 29	2,413	2,360	2,443	2,160	1,568	1,551	2,192	1,960	1,832
30 - 34	1,172	1,116	1,200	1,063	644	597	973	998	981
35 - 34	717	696	670	677	382	309	534	595	538
40 - 44	431	414	399	330	231	181	381	419	371
45 - 49	250	296	270	254	167	116	262	277	241
50 - 54	144	167	156	143	88	71	133	152	125
55 - 59	69	90	97	72	36	33	74	89	82
60 & over	56	53	58	48	24	14	57	64	52
Total	9,483	9,385	9,174	8,085	5,789	5,091	7,399	6,886	6,470

Source: Ministry of Justice

Table 5: Percentage distribution of registered marriages bride by age-group

Age Group	2016	2017	2018	2019	2020	2021	2022	2023	2024
Under 20	8.7	9.0	7.6	8.1	9.4	8.4	6.5	6.3	6.1
20 - 24	35.9	35.7	34.7	33.2	36.4	35.2	31.2	27.6	28.6
25 - 29	25.4	25.1	26.6	26.7	27.1	30.5	29.6	28.5	28.3
30 - 34	12.4	11.9	13.1	13.1	11.1	11.7	13.2	14.5	15.2
35 - 34	7.6	7.4	7.3	8.4	6.6	6.1	7.2	8.6	8.3
40 - 44	4.5	4.4	4.3	4.1	4.0	3.6	5.1	6.1	5.7
45 - 49	2.6	3.2	2.9	3.1	2.9	2.3	3.5	4.0	3.7
50 - 54	1.5	1.8	1.7	1.8	1.5	1.4	1.8	2.2	1.9
55 - 59	0.7	1.0	1.1	0.9	0.6	0.6	1.0	1.3	1.3
60 & over	0.6	0.6	0.6	0.6	0.4	0.3	0.8	0.9	0.8

Source: Ministry of Justice

Table 6: Total number of grooms and brides marital status

Years	Grooms			Bride		
	Bachelor	Widower	Divorced	Spinster	Widow	Divorcee
2016	7,850	273	1,360	7,886	251	1,346
2017	7,599	287	1,499	7,692	283	1,410
2018	7,475	263	1,435	7,447	273	1,439
2019	6,605	210	1,175	6,507	208	1,072
2020	4,766	190	833	4,736	201	852
2021	4,288	138	665	4,265	144	682
2022	5,930	258	1,211	5,944	243	1,212
2023	5,491	240	1,155	5,371	260	1,255
2024	5,224	220	1,026	5,111	219	1,140
Grand Total	55,228	2,079	10,359	54,959	2,082	10,408

Source: Ministry of Justice

Table 7: Marital status percentage change on corresponding period in previous year

Years	Grooms			Bride		
	Bachelor	Widower	Divorced	Spinster	Widow	Divorcee
2016	41.4	1.4	7.2	41.6	1.3	7.1
2017	40.5	1.5	8.0	41.0	1.5	7.5
2018	40.8	1.4	7.8	40.6	1.5	7.8
2019	41.9	1.3	7.4	41.2	1.3	6.8
2020	41.2	1.6	7.2	40.9	1.7	7.4
2021	42.1	1.4	6.5	41.9	1.4	6.7
2022	40.1	1.7	8.2	40.2	1.6	8.2
2023	39.9	1.7	8.4	39.0	1.9	9.1
2024	40.4	1.7	7.9	39.5	1.7	8.8

Source: Ministry of Justice

Table 8: Percentage distribution registered marriage by months

Year	2016	2017	2018	2019	2020	2021	2022	2023	2024
Jan	6.9	6.8	7.5	7.5	7.8	6.1	6.0	6.1	6.8
Feb	6.1	7.0	6.8	7.9	8.0	7.4	6.2	7.1	7.0
Mar	7.4	7.6	7.5	9.0	7.7	8.6	6.9	7.5	7.6
Apr	9.0	8.0	7.0	9.5	4.1	7.5	8.0	8.0	7.6
May	8.6	8.6	8.7	9.3	6.2	2.5	7.9	8.5	9.4
Jun	8.5	7.3	8.5	8.9	7.7	4.2	8.4	9.3	7.8
Jul	8.6	8.8	8.8	8.2	9.1	7.1	10.2	8.4	8.9
Aug	9.7	9.7	10.4	8.1	9.3	6.7	9.5	9.9	9.5
Sep	7.3	7.4	7.5	7.0	7.9	8.3	8.1	9.2	8.4
Oct	8.2	9.0	7.9	7.2	9.6	10.2	9.1	7.3	8.2
Nov	9.7	9.2	8.8	8.8	10.3	13.3	8.6	8.3	8.5
Dec	10.0	10.4	10.5	8.6	12.4	17.9	11.0	10.5	10.2
Grand Total	100.0	100.0	100.0	100.0	100.0	100.0	100.0	100.0	100.0

Source: Ministry of Justice

Table 9: Total registered marriage by months

Year	2016	2017	2018	2019	2020	2021	2022	2023	2024
Jan	652	634	691	605	454	313	447	420	443
Feb	583	658	625	642	462	377	456	488	455
Mar	705	709	691	727	447	438	514	515	494
Apr	855	753	645	772	237	384	591	549	493
May	816	809	799	748	359	127	588	584	608
Jun	803	689	776	719	443	216	625	639	506
Jul	814	829	809	659	525	362	755	576	576
Aug	917	913	954	657	538	342	702	679	616
Sep	694	696	688	562	455	425	597	632	542
Oct	780	848	724	586	555	518	671	506	529
Nov	919	867	809	711	599	676	640	573	547
Dec	945	980	963	697	715	913	813	725	661
Grand Total	9,483	9,385	9,174	8,085	5,789	5,091	7,399	6,886	6,470

Source: Ministry of Justice

Table 10: Groom marriage type by age-group

COURT MARRIAGE

Age Group	2016	2017	2018	2019	2020	2021	2022	2023	2024
<19	100	118	103	91	58	67	67	58	57
20 - 24	2,085	2,101	1,894	1,114	989	941	996	846	906
25 - 29	3,182	2,964	3,081	1,552	1,400	1,466	1,634	1,440	1,312
30 - 34	1,758	1,809	1,721	884	654	781	1,020	931	843
35 - 39	917	894	922	505	356	402	553	494	483
40 - 44	511	515	518	248	210	219	316	310	282
45 - 49	375	361	321	180	104	108	192	205	203
50 - 54	264	271	260	149	103	63	138	142	111
55 - 59	138	186	156	80	76	51	90	105	85
60 & over	147	163	164	85	69	56	112	100	91
Total	9,477	9,382	9,140	4,888	4,019	4,154	5,118	4,631	4,373

Groom

RELIGIOUS MARRIAGE

<19	0	0	0	26	23	10	18	14	10
20 - 24	1	1	3	523	341	201	324	257	262
25 - 29	0	2	16	1,122	653	377	817	737	691
30 - 34	2	0	7	669	351	183	525	512	469
35 - 39	1	0	4	357	180	88	242	284	261
40 - 44	1	0	2	191	81	29	128	164	159
45 - 49	0	0	1	127	49	13	78	108	74
50 - 54	0	0	0	70	39	18	51	72	66
55 - 59	0	0	0	56	23	9	47	48	53
60 & over	1	0	1	56	30	9	51	59	52
Total	6	3	34	3,197	1,770	937	2,281	2,255	2,097
Grand Total	9,483	9,385	9,174	8,085	5,789	5,091	7,399	6,886	6,470

Table 11: Bride marriage type by age-group

COURT MARRIAGE

Age Group	2016	2017	2018	2019	2020	2021	2022	2023	2024
<19	827	843	697	474	392	359	375	344	320
20 - 24	3,402	3,347	3,170	1,729	1,503	1,473	1,692	1,403	1,390
25 - 29	2,412	2,360	2,433	1,210	1,018	1,213	1,405	1,248	1,148
30 - 34	1,170	1,116	1,198	582	441	489	633	604	603
35 - 39	717	696	666	381	270	268	368	389	343
40 - 44	431	414	397	208	176	154	278	259	238
45 - 49	249	296	269	146	117	98	189	184	163
50 - 54	144	167	156	91	60	62	84	110	77
55 - 59	69	90	97	37	26	27	53	52	66
60 & over	56	53	57	30	16	11	41	38	25
Total	9,477	,9382	9,140	4,888	4,019	4,154	5,118	4,631	4,373

**Bride
RELIGIOUS MARRIAGE**

<19	1	0	3	182	152	67	108	87	75
20 - 24	1	3	11	953	602	320	618	498	463
25 - 29	1	0	10	950	550	338	787	712	684
30 - 34	2	0	2	481	203	108	340	394	378
35 - 39	0	0	4	296	112	41	166	206	195
40 - 44	0	0	2	122	55	27	103	160	133
45 - 49	1	0	1	108	50	18	73	93	78
50 - 54	0	0	0	52	28	9	49	42	48
55 - 59	0	0	0	35	10	6	21	37	16
60 & over	0		1	18	8	3	16	26	27
Total	6	3	34	3,197	1,770	937	2,281	2,255	2,097
Grand Total	9,483	9,385	9,174	8,085	5,789	5,091	7,399	6,886	6,470