

# STATISTICAL NEWS



FBoS Release No:58, 2023

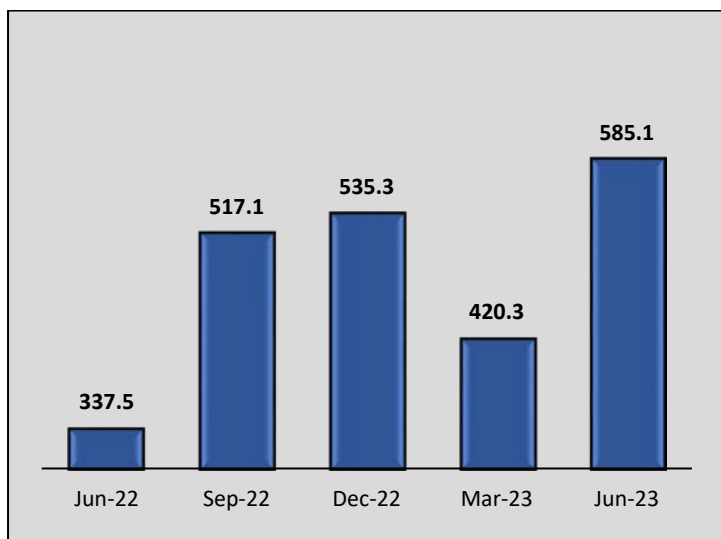
31<sup>st</sup> August 2023

## FIJI'S EARNINGS FROM TOURISM

### June Quarter 2023

Fiji's Earnings from Tourism indicate the spending of our international visitors. The figure is derived from an estimated average daily spend of visitors (per diem) and the total visitor days in Fiji.

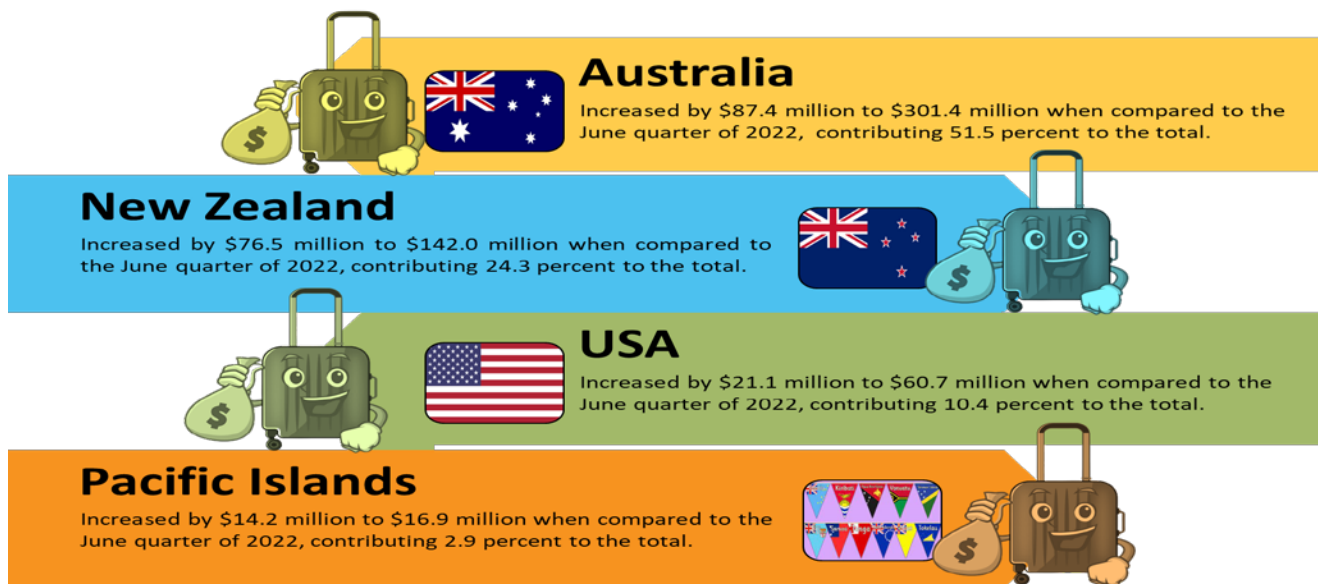
**Graph 1: Earnings from Tourism – FJD [Millions]**



#### Key Facts

- An increase of 73.4 percent was noted in the Fiji's Earnings from Tourism over the June quarter of 2022. The earnings for the quarter stood at \$585.1 million.
- The June quarter 2023 earnings was 39.2 percent (\$164.8 million) higher than the amount recorded for the March quarter of 2023.

**Chart 1: Earnings from Tourism by Major Source Markets – FJD [Millions]**



The changes in the major markets when compared to June Quarter 2022 is presented above. These countries accounted for 89.1 percent of earnings in the June Quarter of 2023.

Please find attached the following:

- **Table 1:** Visitor Arrivals and Visitors Departure [Numbers];
- **Table 2:** Average Length of Stay and Total Visitors Days;
- **Table 3:** Per-Diem Expenditure and Earnings from Tourism; and
- **Table 4:** Earnings from Tourism By Purpose of Visit and Country.

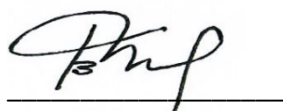
Note that per diem rate for “Others” category has been discounted by 86 percent to exclude accommodation charges covered in the per diem rate for seaman/crew. No adjustments were made to the per diem rate for the remaining visitors in the “Others” category. The total number of “Others” category was 2,183 of which 1,862 was seaman/crew.

For Technical Notes on Fiji’s Earnings from Tourism Statistics, please refer to:

<https://www.statsfiji.gov.fj/statistics/tourism-and-migration-statistics/tourism-earnings-fjd-million26.html>

For further enquiries please contact Ms. Meredani Tiko on email mere\_tiko@statsfiji.gov.fj or telephone 331 5822 (ext. 386 246) or direct line 323 0846.

Fiji’s Earnings from Tourism for the September Quarter of 2023 will be released on 1<sup>st</sup> December, 2023.



Bimlesh Krishna [Mr]

**Chief Statistician – Economic Statistics Division**

---

### **Reproduction of Material**

Any table or material published in this release may be reproduced and published without the Fiji Bureau of Statistics’ prior approval. However, the source of information should always be identified and acknowledged in all modes of presentation.

Table 1

VISITOR ARRIVALS AND VISITOR DEPARTURES  
[NUMBERS]

	Visitor Arrivals										Visitor Departures								
	Business	Conference	Personal						Cruise Ship Passengers*	Total	Business	Conference	Personal						Total
			Visiting Friends/ Relatives	Transit to other Pacific Islands	Education/ Training	Holiday	Others	Total					Visiting Friends/ Relatives	Transit to other Pacific Islands	Education/ Training	Holiday	Others	Total	
<b>Yearly</b>																			
<b>2018</b>	29,755	14,629	80,441	67,188	7,921	658,585	11,790	825,925	187,890	<b>870,309</b>	31,403	15,033	59,631	64,051	6,411	637,008	18,102	785,203	<b>831,639</b>
<b>2019</b>	29,882	18,443	92,026	79,133	8,608	656,249	10,048	846,064	74,537	<b>894,389</b>	30,085	18,385	72,108	74,716	7,768	625,582	34,874	815,048	<b>863,518</b>
<b>2020 [p]</b>	4,282	1,788	15,126	14,260	4,132	99,199	8,118	140,835	21,255	<b>146,905</b>	4,830	1,838	16,932	17,480	1,299	117,821	2,951	156,483	<b>163,151</b>
<b>2021 [p]</b>	1,420	24	2,617	2,049	718	19,922	4,868	30,174	0	<b>31,618</b>	1,127	30	874	2,571	174	9,661	3,877	17,157	<b>18,314</b>
<b>2022 [p]</b>	13,143	4,164	60,837	27,495	2,615	519,797	8,261	619,005	15,863	<b>636,312</b>	12,354	4,211	45,613	23,347	1,414	479,005	5,930	555,309	<b>571,874</b>
<b>Quarterly</b>																			
<b>Mar-21</b>	645	16	107	749	497	184	2,025	3,562	0	<b>4,223</b>	362	5	122	1,262	68	141	817	2,410	<b>2,777</b>
<b>Jun-21</b>	151	1	28	331	137	121	774	1,391	0	<b>1,543</b>	199	9	52	428	38	110	1,256	1,884	<b>2,092</b>
<b>Sep-21</b>	140	0	5	37	15	147	987	1,191	0	<b>1,331</b>	57	11	26	79	33	73	494	705	<b>773</b>
<b>Dec-21</b>	484	7	2,477	932	69	19,470	1,082	24,030	0	<b>24,521</b>	509	5	674	802	35	9,337	1,310	12,158	<b>12,672</b>
<b>Mar-22</b>	1,456	98	4,391	1,340	1,006	39,609	1,006	47,352	0	<b>48,906</b>	1,375	83	4,049	1,336	88	43,487	583	49,543	<b>51,001</b>
<b>Jun-22</b>	3,757	745	19,649	3,578	493	126,181	2,220	152,121	0	<b>156,623</b>	3,094	684	12,215	3,444	268	111,778	1,776	129,481	<b>133,259</b>
<b>Sep-22</b>	4,513	1,553	22,134	8,965	963	180,330	2,947	215,339	3,280	<b>221,405</b>	4,253	1,509	19,227	7,588	580	169,370	1,934	198,699	<b>204,461</b>
<b>Dec-22</b>	3,417	1,768	14,663	13,612	153	173,677	2,088	204,193	12,583	<b>209,378</b>	3,632	1,935	10,122	10,979	478	154,370	1,637	177,586	<b>183,153</b>
<b>Mar-23</b>	5,143	2,522	11,929	18,405	2,061	132,684	2,540	167,619	12,903	<b>175,284</b>	5,192	2,352	10,756	15,865	188	136,488	1,280	164,577	<b>172,121</b>
<b>Jun-23</b>	5,895	2,715	19,670	17,704	283	193,156	3,145	233,958	23,848	<b>242,568</b>	5,803	2,988	14,437	15,474	186	173,718	2,183	205,998	<b>214,789</b>

**Notes:**

- Visitor Arrivals and Departure numbers are sourced from the Fiji Immigration Department.
- Visitors Arrival and Departure numbers are still provisional as from 2020.
- Cruise ship passengers are not included in visitor arrivals and departures since they are only transiting.
- Total values are subject to rounding off.
- \* Cruise ship passengers are dependent on the number of cruise ships visiting.

Table 2

**AVERAGE LENGTH OF STAY AND TOTAL VISITOR DAYS  
[DAYS]**

	Average Length of Stay									Total Visitor Days									
	Business	Conference	Personal					Cruise Ship Passengers	Total*	Business	Conference	Personal					Cruise Ship Passengers**	Total	
			Visiting Friends/ Relatives	Transit to other Pacific Islands	Education/ Training	Holiday	Others					Visiting Friends/ Relatives	Transit to other Pacific Islands	Education/ Training	Holiday	Others			Total
<b>Yearly</b>																			
<b>2018 [p]</b>	10.4	6.9	20.6	1.9	25.5	8.4	14.6	1.0	<b>11.2</b>	325,605	103,420	1,216,440	121,320	163,067	5,360,948	268,035	7,129,810	140,917	<b>7,699,752</b>
<b>2019 [p]</b>	10.4	6.9	20.5	1.9	25.4	8.4	14.6	1.0	<b>11.1</b>	311,282	126,612	1,470,473	142,582	199,462	5,261,843	509,117	7,583,477	55,903	<b>8,077,274</b>
<b>2020 [p]</b>	10.3	6.9	20.5	1.9	25.4	8.4	14.6	1.0	<b>12.2</b>	46,052	12,683	366,680	27,950	32,473	989,652	43,199	1,459,953	15,941	<b>1,534,630</b>
<b>2021[p]</b>	10.3	6.9	20.5	1.9	25.4	8.4	14.6	0.0	<b>12.6</b>	11,673	207	17,975	4,551	4,398	80,222	57,186	164,332	0	<b>176,212</b>
<b>2022[p]</b>	10.3	6.9	20.5	1.9	25.4	8.4	14.6	1.0	<b>11.8</b>	128,453	28,852	918,284	45,202	36,436	4,030,901	86,011	5,116,834	11,897	<b>5,286,036</b>
<b>Quarterly</b>																			
<b>Mar-21</b>	9.4	6.9	21.7	1.5	24.9	8.4	14.7	0.0	<b>12.5</b>	3,403	35	2,647	1,893	1,693	1,184	12,010	19,427	0	<b>22,865</b>
<b>Jun-21</b>	11.7	7.2	20.7	2.3	21.2	8.3	16.2	0.0	<b>12.5</b>	2,328	65	1,076	984	806	913	20,347	24,126	0	<b>26,519</b>
<b>Sep-21</b>	9.6	6.5	19.3	1.9	20.5	8.6	13.4	0.0	<b>11.4</b>	547	72	502	150	677	628	6,620	8,577	0	<b>9,196</b>
<b>Dec-21</b>	10.6	7.0	20.4	1.9	34.9	8.3	13.9	0.0	<b>13.9</b>	5,395	35	13,750	1,524	1,222	77,497	18,209	112,202	0	<b>117,632</b>
<b>Mar-22</b>	9.4	6.9	21.7	1.5	24.8	8.4	14.7	0.0	<b>12.5</b>	12,925	573	87,863	2,004	2,182	365,291	8,570	465,910	0	<b>479,408</b>
<b>Jun-22</b>	11.7	7.2	20.7	2.3	21.2	8.3	16.2	0.0	<b>12.5</b>	36,200	4,925	252,851	7,921	5,682	927,757	28,771	1,222,982	0	<b>1,264,107</b>
<b>Sep-22</b>	9.6	6.5	19.3	1.9	20.5	8.6	13.4	1.0	<b>10.1</b>	40,829	9,809	371,081	14,417	11,890	1,456,582	25,916	1,879,886	2,460	<b>1,932,984</b>
<b>Dec-22</b>	10.6	7.0	20.4	1.9	34.9	8.3	13.9	1.0	<b>12.3</b>	38,499	13,545	206,489	20,860	16,682	1,281,271	22,754	1,548,056	9,437	<b>1,609,537</b>
<b>Mar-23</b>	9.4	6.9	21.7	1.5	24.8	8.4	14.7	1.0	<b>11.1</b>	48,805	16,229	233,405	23,798	4,662	1,146,499	18,816	1,427,180	9,677	<b>1,501,891</b>
<b>Jun-23</b>	11.7	7.2	20.7	2.3	21.2	8.3	16.2	1.0	<b>11.1</b>	67,895	21,514	298,846	35,590	3,943	1,441,859	35,365	1,815,603	17,886	<b>1,922,898</b>

**Notes:**

- Average Length of Stay have been estimated from Annual 2013 to June Quarter 2023, therefore these numbers are still provisional.

- Total values are subject to rounding off.

\* The total is an average of all the purpose of visits.

\*\* Although number of cruise ship passengers are not included in the total arrivals and departures since they are only transiting, it is assumed that seventy-five percent of them get off the ship to sightsee, shop, eat and drink during the day.

Table 3

## PER-DIEM EXPENDITURE [FJD] AND EARNINGS FROM TOURISM [FJD MILLIONS]

	Per-Diem Expenditure [FJD]								Earnings From Tourism [FJD Millions]											
	Business	Conference	Personal					Cruise Ship Passengers*	Of which: Vat Refunded Under TVRS**	Business	Conference	Personal					Cruise Ship Passengers	Total Earnings		
			Visiting Friends/ Relatives	Transit to other Pacific Islands	Education/ Training	Holiday	Others					Visiting Friends/ Relatives	Transit to other Pacific Islands	Education/ Training	Holiday	Others			Total	
<b>Yearly</b>																				
<b>2018 [p]</b>	318.9	275.6	86.0	180.2	182.1	308.4	192.5	80.1	1.4	102.3	28.2	106.6	22.0	28.5	1,660.7	50.6	1,868.4	11.4	<b>2,010.3</b>	
<b>2019 [p]</b>	320.0	276.7	87.1	181.3	183.2	309.5	193.6	87.3	1.2	99.2	34.1	130.6	26.2	34.8	1,635.8	99.5	1,926.9	5.1	<b>2,065.4</b>	
<b>2020 [p]</b>	304.3	263.5	83.1	172.7	174.9	295.2	184.8	83.2	0.2	13.5	3.7	21.1	4.5	5.4	262.4	2.9	296.3	1.4	<b>314.9</b>	
<b>2021 [p]</b>	301.1	258.8	82.6	170.5	170.4	291.3	181.7	82.2	0.0	3.4	0.0	1.7	0.7	0.7	27.2	2.7	33.1	0.0	<b>36.5</b>	
<b>2022[p]</b>	330.9	285.3	90.9	187.6	187.9	321.2	200.3	90.7	1.5	44.0	8.2	89.1	9.2	6.7	1,335.9	4.9	1,445.8	1.3	<b>1,499.3</b>	
<b>Quarterly</b>																				
<b>Mar-21</b>	264.8	274.7	52.3	140.3	147.0	244.8	134.9	79.5	0.0	0.9	0.0	0.1	0.3	0.2	0.3	1.0	1.9	0.0	<b>2.8</b>	
<b>Jun-21</b>	184.1	226.2	75.8	144.1	206.8	292.3	202.4	73.9	0.0	0.4	0.0	0.1	0.1	0.2	0.3	0.6	1.3	0.0	<b>1.7</b>	
<b>Sep-21</b>	404.6	258.6	96.3	207.2	189.4	287.0	199.3	73.9	0.0	0.2	0.0	0.0	0.0	0.1	0.2	0.5	0.9	0.0	<b>1.2</b>	
<b>Dec-21</b>	351.0	275.7	105.8	190.3	138.5	341.1	190.2	101.4	0.0	1.9	0.0	1.5	0.3	0.2	26.4	0.6	28.9	0.0	<b>30.8</b>	
<b>Mar-22</b>	293.9	305.0	58.1	155.7	163.2	271.8	149.8	88.2	0.1	3.8	0.2	5.1	0.3	0.4	99.3	0.3	105.4	0.0	<b>109.4</b>	
<b>Jun-22</b>	205.8	252.8	84.7	161.1	231.2	326.8	226.3	82.7	0.4	7.5	1.2	21.4	1.3	1.3	303.2	1.6	328.8	0.0	<b>337.5</b>	
<b>Sep-22</b>	436.1	278.8	103.8	223.4	204.2	309.3	214.9	79.7	0.6	17.8	2.7	38.5	3.2	2.4	450.5	1.8	496.4	0.2	<b>517.1</b>	
<b>Dec-22</b>	387.8	304.7	116.9	210.2	153.0	376.9	210.2	112.0	0.4	14.9	4.1	24.1	4.4	2.6	482.9	1.2	515.2	1.1	<b>535.3</b>	
<b>Mar-23</b>	352.4	365.6	69.6	186.7	195.7	325.8	179.6	105.8	0.4	17.2	5.9	16.2	4.4	0.9	373.5	1.2	396.2	1.0	<b>420.3</b>	
<b>Jun-23</b>	228.9	281.2	94.2	179.1	257.1	363.4	251.7	91.9	0.5	15.5	6.0	28.2	6.4	1.0	524.0	2.4	561.9	1.6	<b>585.1</b>	

## Notes:

- Total values are subject to rounding off.

\* Although number of cruise ship passengers are not included in the total arrivals and departures since they are only transiting, it is assumed that seventy-five percent of them get off the ship to sightseeing, shop, eat and drink during the day.

\*\* TVRS (Tourist Vat Refund Scheme).

- [p] provisional, [r] revised

Table 4

## EARNINGS FROM TOURISM BY PURPOSE OF VISIT AND COUNTRY

FJD [Millions]

	ANNUAL				QUARTERLY		
	2019 [p]	2020 [p]	2021 [p]	2022 [p]	Jun - 22	Mar - 23	Jun - 23
<b>TOURISM EARNINGS</b>	<b>2,065.4</b>	<b>314.9</b>	<b>36.5</b>	<b>1,499.3</b>	<b>337.5</b>	<b>420.3</b>	<b>585.1</b>
Australia	893.8	144.7	24.3	870.6	214.0	241.3	301.4
Canada	28.0	6.0	0.3	18.2	3.1	11.1	11.3
China	98.5	17.2	1.0	8.1	1.8	3.9	14.2
Continental Europe	70.5	13.8	0.4	20.6	3.4	9.9	12.9
India	12.7	2.4	0.0	4.3	0.9	1.3	2.8
Japan	36.4	5.8	0.4	1.9	0.3	0.6	5.7
Korea	14.9	0.9	0.2	1.4	0.3	0.5	0.8
Malaysia	2.7	0.4	0.0	0.6	0.1	0.3	0.3
New Zealand	470.1	51.9	0.4	343.5	65.5	78.8	142.0
Pacific Islands	79.9	12.8	1.5	33.1	2.7	16.7	16.9
Rest of Asia	39.0	6.4	1.8	11.5	2.7	3.4	5.4
Taiwan	4.0	0.5	0.0	0.2	0.1	2.1	0.3
United Kingdom	43.4	8.0	0.1	12.5	2.1	5.3	5.0
United States of America	219.3	36.1	6.1	165.6	39.6	41.6	60.7
Others	47.2	6.5	0.0	5.8	1.0	2.6	3.8
<i>Cruise Ship passengers*</i>	5.1	1.4	0.0	1.3	0.0	1.0	1.6
of which :							
<b>Business /Conference</b>	<b>133.3</b>	<b>17.2</b>	<b>3.5</b>	<b>52.2</b>	<b>8.7</b>	<b>23.1</b>	<b>21.5</b>
Australia	39.5	4.7	1.0	19.6	3.7	7.0	7.1
Canada	1.2	0.1	0.0	0.3	0.1	0.1	0.2
China	8.1	1.4	0.6	0.9	0.1	1.2	0.5
Continental Europe	4.3	0.5	0.2	1.8	0.4	0.6	0.6
India	2.4	0.5	0.0	0.6	0.1	0.1	0.2
Japan	2.3	0.3	0.0	0.6	0.1	0.2	0.2
Korea	1.7	0.1	0.0	0.5	0.1	0.1	0.1
Malaysia	0.9	0.2	0.0	0.2	0.0	0.1	0.0
New Zealand	28.8	3.5	0.1	11.9	2.2	3.8	4.8
Pacific Islands	16.0	2.1	0.0	6.4	0.3	4.3	4.1
Rest of Asia	8.8	1.5	0.8	2.8	0.6	1.6	0.9
Taiwan	0.6	0.0	0.0	0.0	0.0	1.3	0.0
United Kingdom	2.5	0.3	0.0	0.7	0.1	0.3	0.2
United States of America	11.5	1.3	0.6	5.4	0.9	2.0	2.1
Others	4.8	0.5	0.0	0.5	0.0	0.5	0.4
<b>Visiting Friends &amp; Relatives</b>	<b>130.6</b>	<b>21.1</b>	<b>1.7</b>	<b>89.1</b>	<b>21.4</b>	<b>16.2</b>	<b>28.2</b>
Australia	50.6	8.9	1.0	36.4	9.2	6.8	9.8
Canada	6.1	0.8	0.1	4.3	0.8	0.8	1.3
China	1.9	0.3	0.0	0.1	0.0	0.1	0.3
Continental Europe	1.2	0.2	0.0	0.5	0.1	0.1	0.3
India	1.0	0.1	0.0	0.4	0.1	0.0	0.2
Japan	0.7	0.1	0.0	0.1	0.0	0.0	0.1
Korea	0.7	0.1	0.0	0.1	0.0	0.0	0.0
Malaysia	0.1	0.0	0.0	0.0	0.0	0.0	0.0
New Zealand	37.7	6.3	0.0	28.8	7.8	5.1	7.6
Pacific Islands	9.0	1.7	0.1	3.2	0.2	1.3	3.9
Rest of Asia	0.8	0.1	0.0	0.3	0.1	0.1	0.5
Taiwan	0.4	0.0	0.0	0.0	0.0	0.0	0.0
United Kingdom	2.2	0.4	0.0	0.9	0.2	0.2	0.2
United States of America	16.9	1.9	0.4	13.8	2.9	1.7	3.7
Others	1.4	0.2	0.0	0.2	0.0	0.0	0.2
<b>Holiday</b>	<b>1,635.8</b>	<b>262.4</b>	<b>27.2</b>	<b>1,335.9</b>	<b>303.2</b>	<b>373.5</b>	<b>524.0</b>
Australia	774.4	129.6	21.7	809.6	200.0	226.1	283.4
Canada	18.8	5.0	0.2	13.3	2.2	9.8	9.6
China	75.8	14.1	0.0	5.0	0.6	2.4	12.0
Continental Europe	60.5	12.9	0.1	18.1	2.8	9.1	11.9
India	7.4	1.8	0.0	3.2	0.7	0.9	2.4
Japan	26.0	3.8	0.1	1.0	0.2	0.3	5.1
Korea	10.4	0.7	0.0	0.8	0.1	0.3	0.5
Malaysia	1.4	0.2	0.0	0.5	0.1	0.2	0.3
New Zealand	383.7	40.8	0.1	300.4	55.3	69.0	128.6
Pacific Islands	20.1	5.7	0.2	17.4	1.6	9.0	6.3
Rest of Asia	16.3	3.2	0.1	6.6	1.6	1.6	2.2
Taiwan	2.5	0.3	0.0	0.1	0.0	0.8	0.2
United Kingdom	33.5	7.3	0.0	10.9	1.9	4.8	4.6
United States of America	174.6	31.6	4.6	144.0	35.2	37.3	53.8
Others	30.4	5.4	0.0	4.9	0.9	1.9	3.0

Note: Total values are subject to rounding off.

\* Cruise ship passengers are not available by country.

- [p] provisional, [r] revised